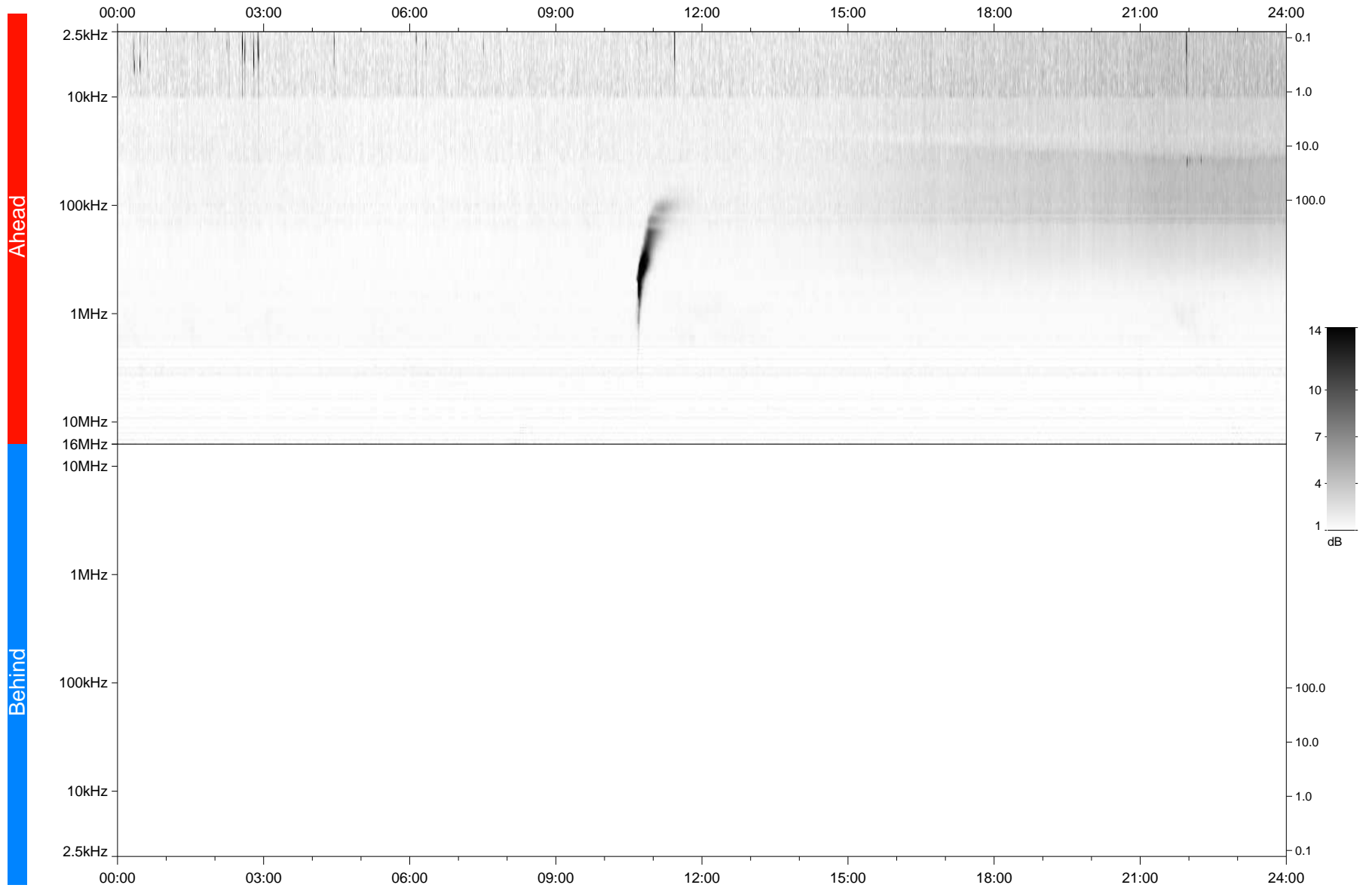


STEREO/WAVES Daily Summary - 17-Aug-2021 (DOY 229)

Ahead source file: swaves_ahead_2021_229_1_07.fin
Ahead PSE Angle: -43.2°



Behind PSE Angle: 37.9°
Behind source file: No STEREO-B data

Time (UTC)

file: stereo_swaves_daily-summary_gray_20210817_v04
made by: space.umn.edu on macOS with IDL 8.8.2 on 2022-10-02 18:04:53, with TLib V945 / dynspec V311