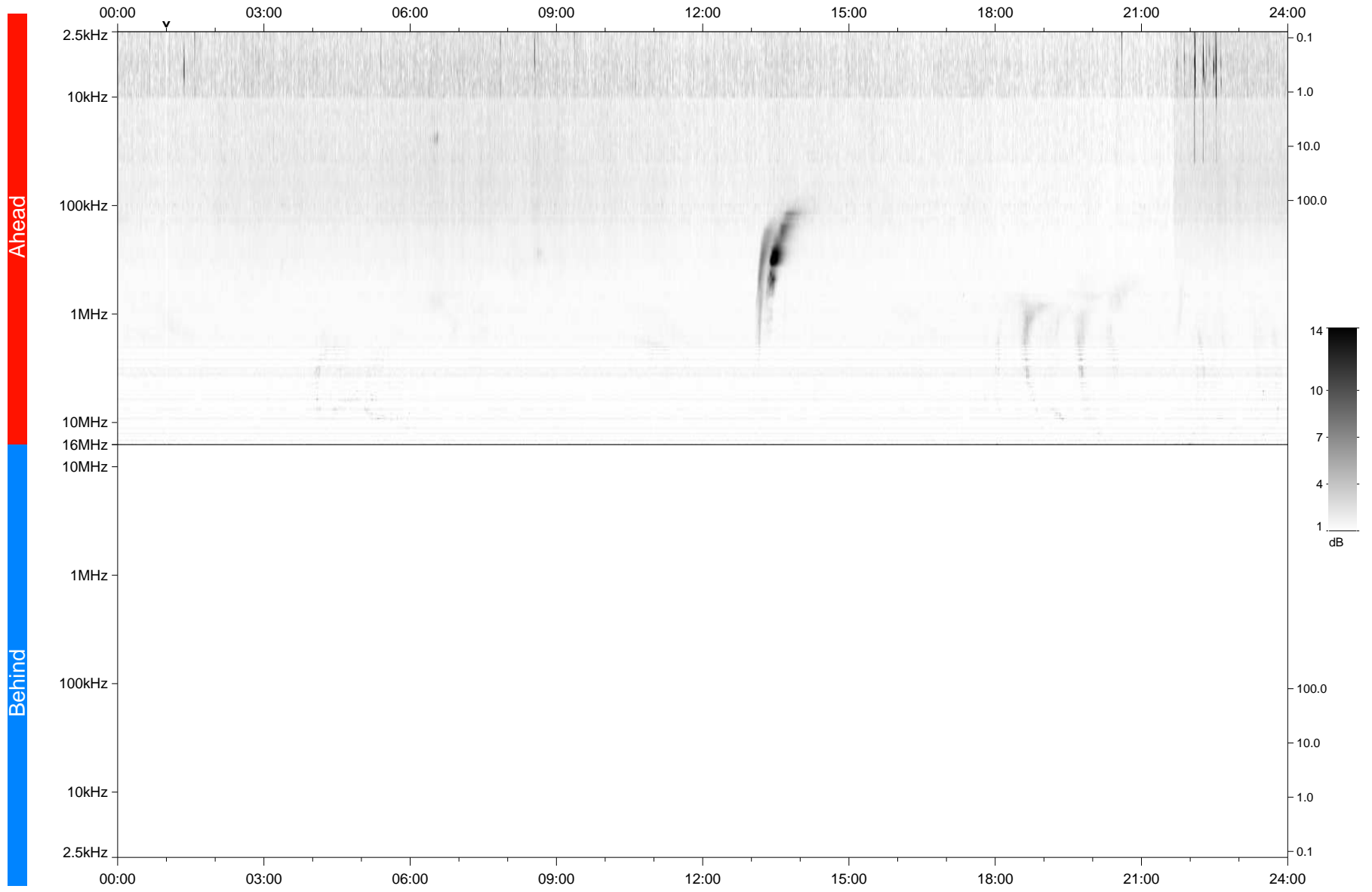


STEREO/WAVES Daily Summary - 16-Aug-2021 (DOY 228)

Ahead source file: swaves_ahead_2021_228_1_06.fin
Ahead PSE Angle: -43.3°



Behind PSE Angle: 37.9°
Behind source file: No STEREO-B data

Time (UTC)

file: stereo_swaves_daily-summary_gray_20210816_v04
made by: space.umn.edu on macOS with TDL 8.8.2 on 2022-10-02 18:03:23, with TLib V945 / dynspec V311