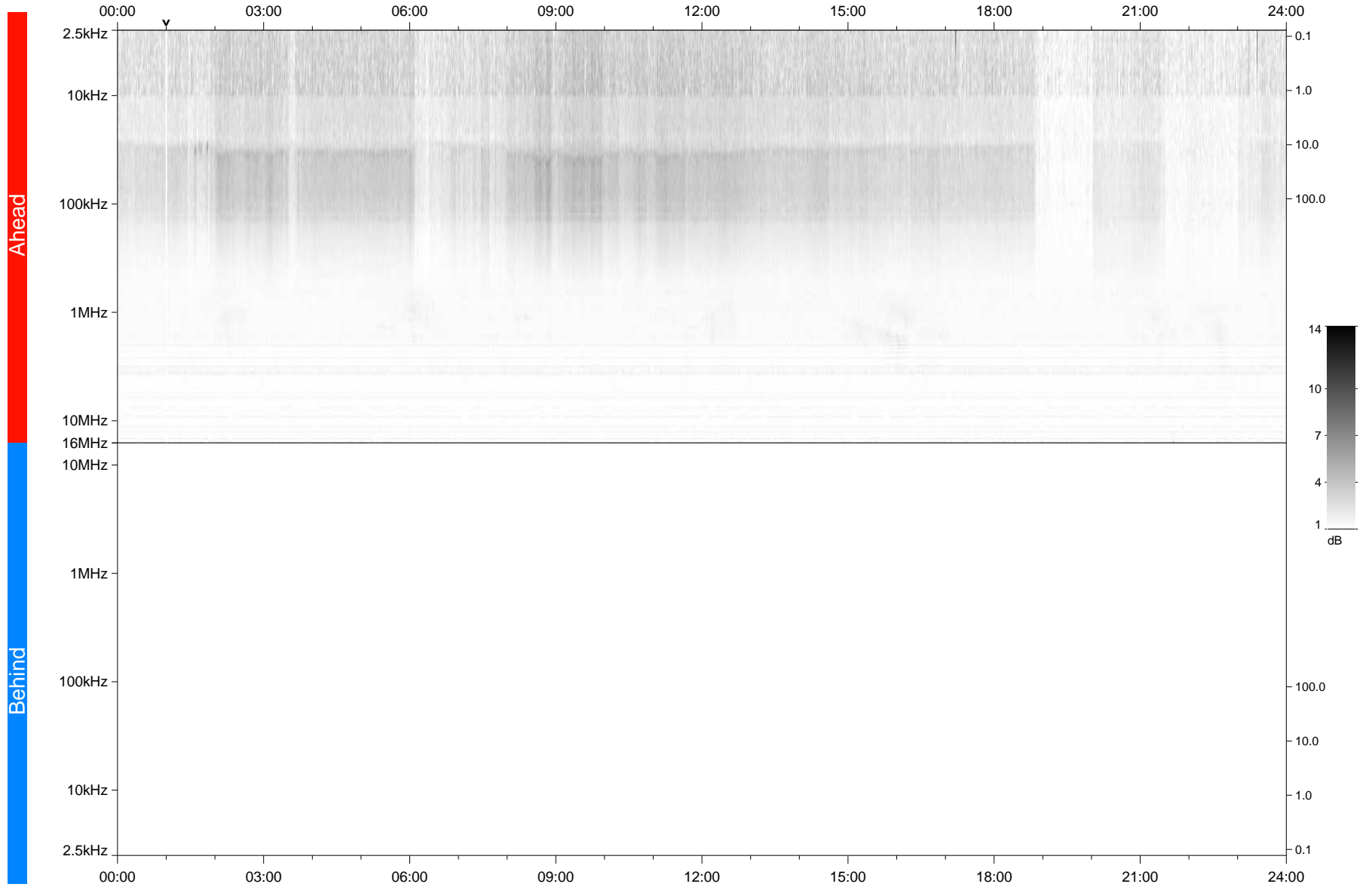


STEREO/WAVES Daily Summary - 10-Aug-2021 (DOY 222)

Ahead source file: swaves_ahead_2021_222_1_05.fin
Ahead PSE Angle: -43.9°



Behind PSE Angle: 38.4°
Behind source file: No STEREO-B data

Time (UTC)

file: stereo_swaves_daily-summary_gray_20210810_v04
made by: space.umn.edu on macOS with IDL 8.8.2 on 2022-10-02 17:54:23, with TLib V945 / dynspec V311