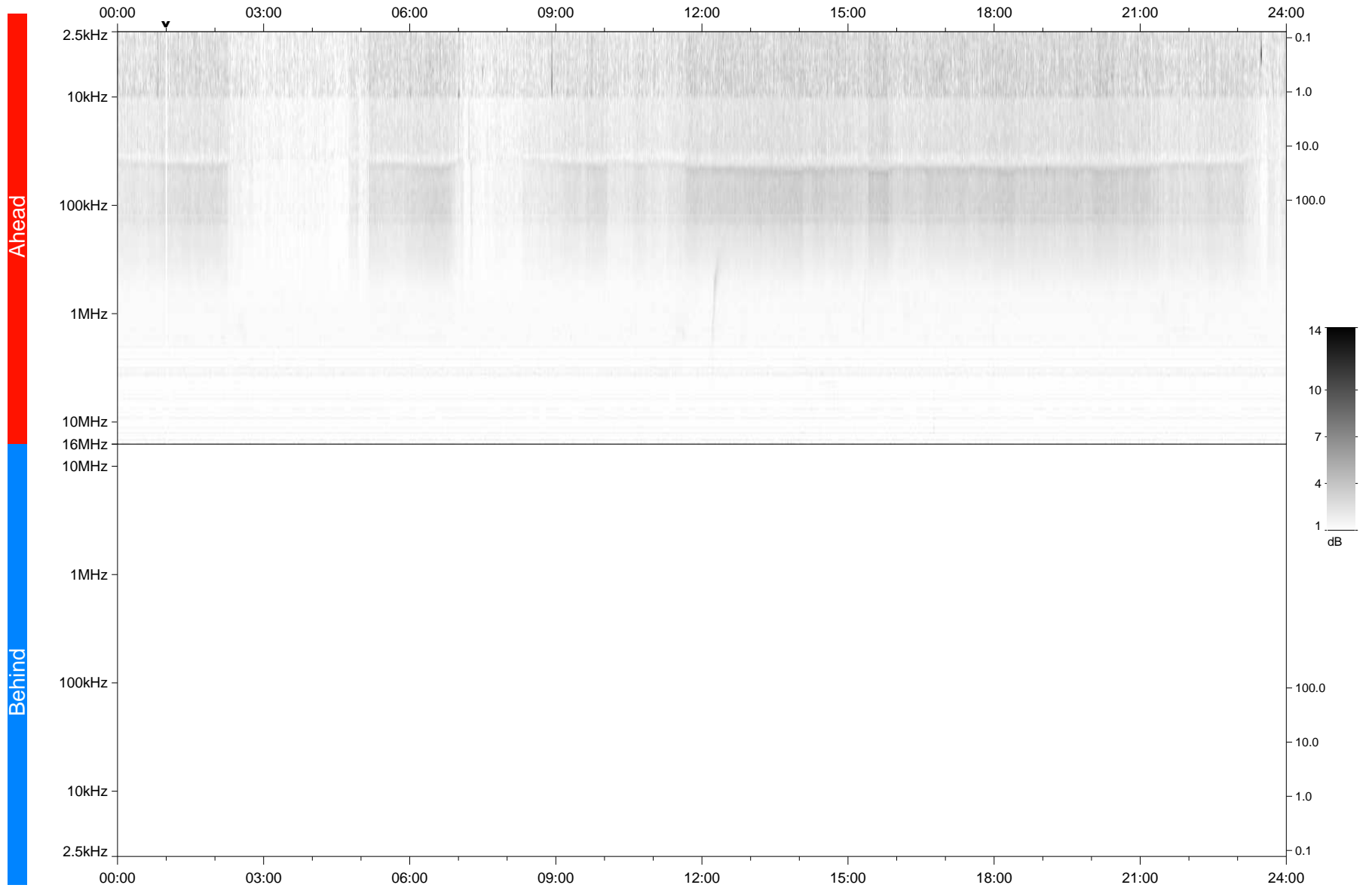


STEREO/WAVES Daily Summary - 04-Aug-2021 (DOY 216)

Ahead source file: swaves_ahead_2021_216_1_05.fin
Ahead PSE Angle: -44.5°



Behind PSE Angle: 38.8°
Behind source file: No STEREO-B data

Time (UTC)

file: stereo_swaves_daily-summary_gray_20210804_v03
made by: space.umn.edu on macOS with IDL 8.8.2 on 2022-08-24 18:42:59, with TMLib V945 / dynspec V311