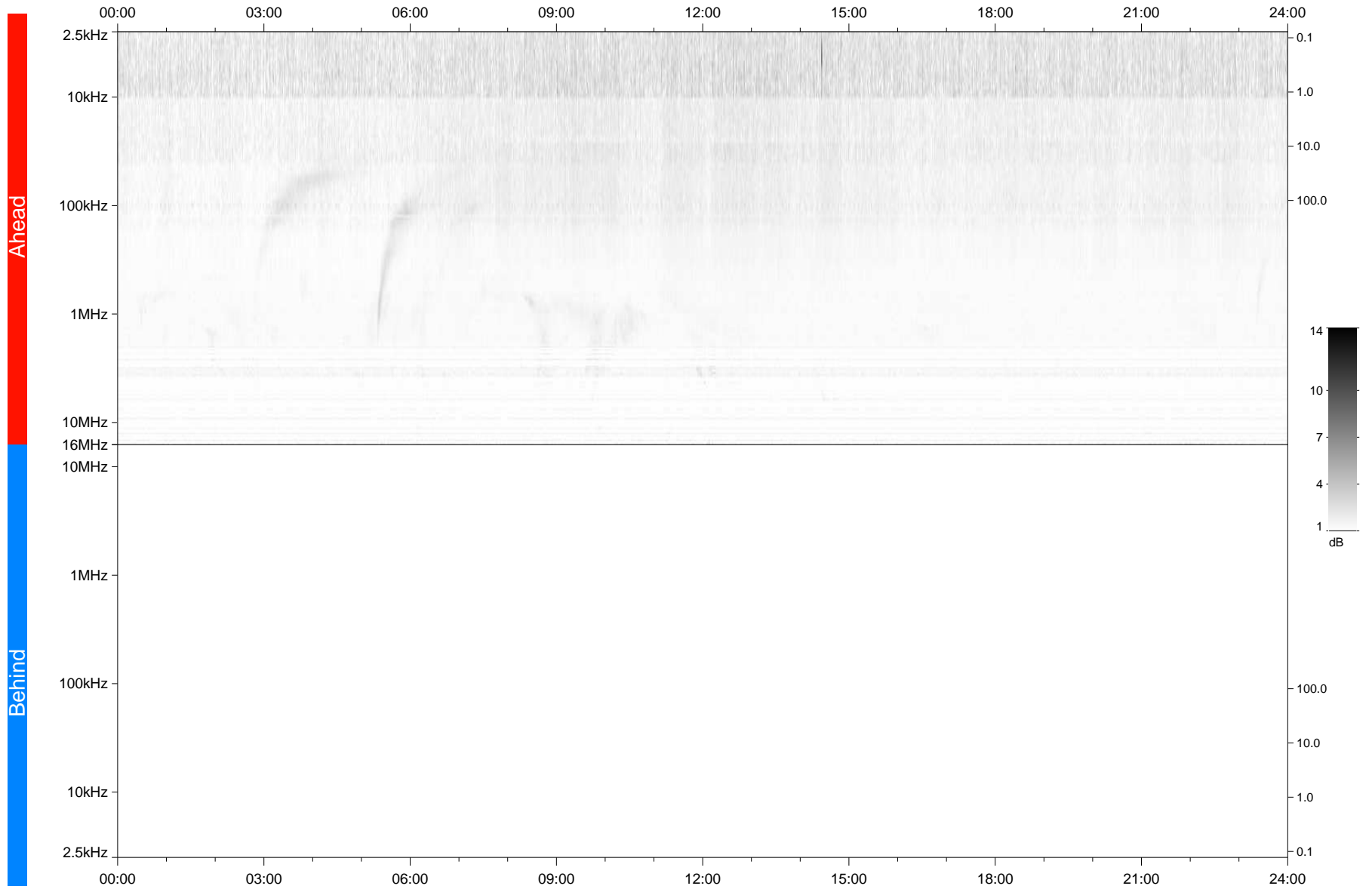


STEREO/WAVES Daily Summary - 30-Jul-2021 (DOY 211)

Ahead source file: swaves_ahead_2021_211_1_06.fin
Ahead PSE Angle: -45.0°



Behind PSE Angle: 39.2°
Behind source file: No STEREO-B data

Time (UTC)

file: stereo_swaves_daily-summary_gray_20210730_v04
made by: space.umn.edu on macOS with IDL 8.8.2 on 2022-10-02 17:37:56, with TLib V945 / dynspec V311