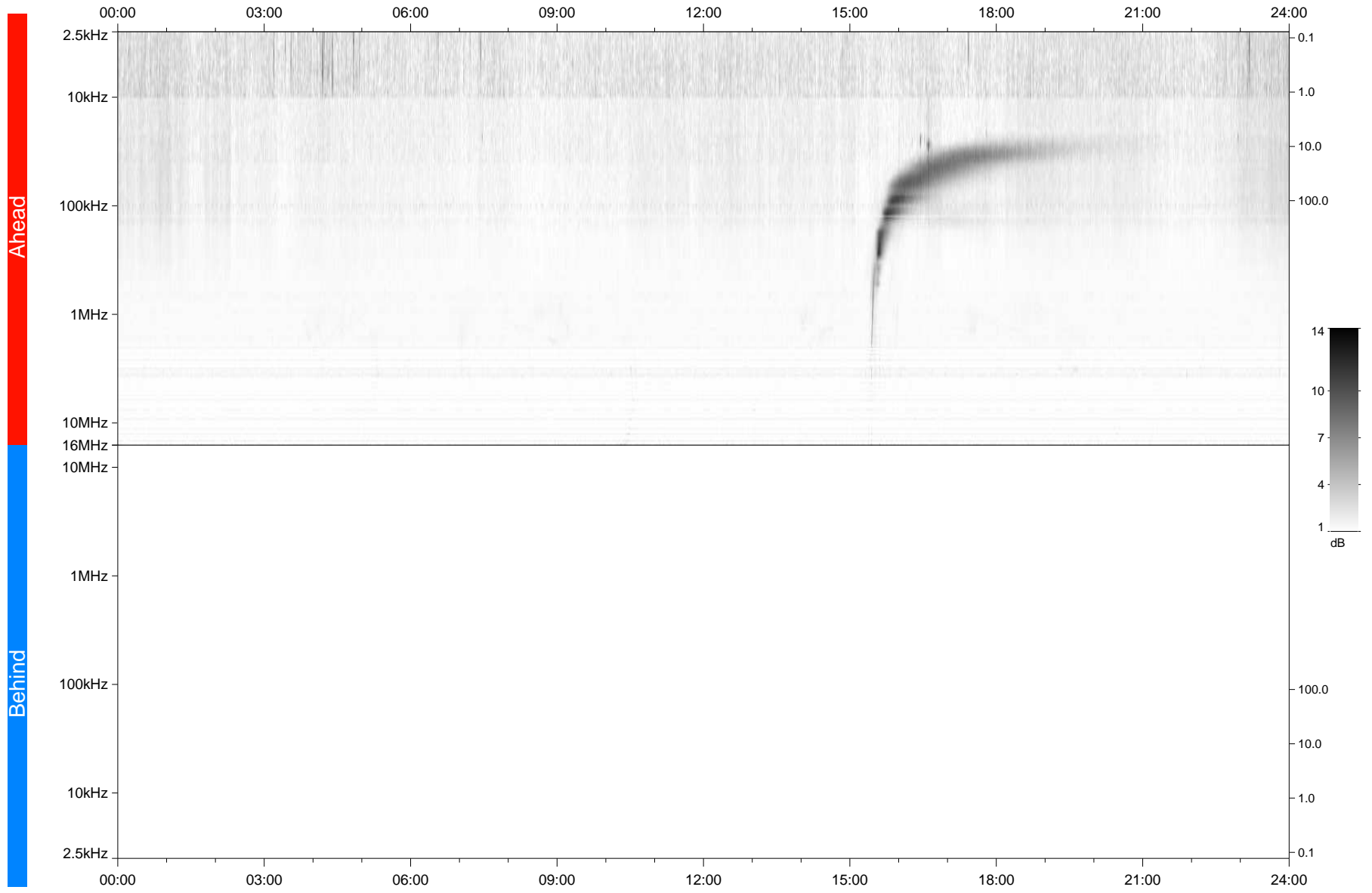


STEREO/WAVES Daily Summary - 26-Jul-2021 (DOY 207)

Ahead source file: swaves_ahead_2021_207_1_05.fin
Ahead PSE Angle: -45.4°



Behind PSE Angle: 39.6°
Behind source file: No STEREO-B data

Time (UTC)

file: stereo_swaves_daily-summary_gray_20210726_v04
made by: space.umn.edu on macOS with TDL 8.8.2 on 2022-10-02 17:31:55, with TLib V945 / dynspec V311