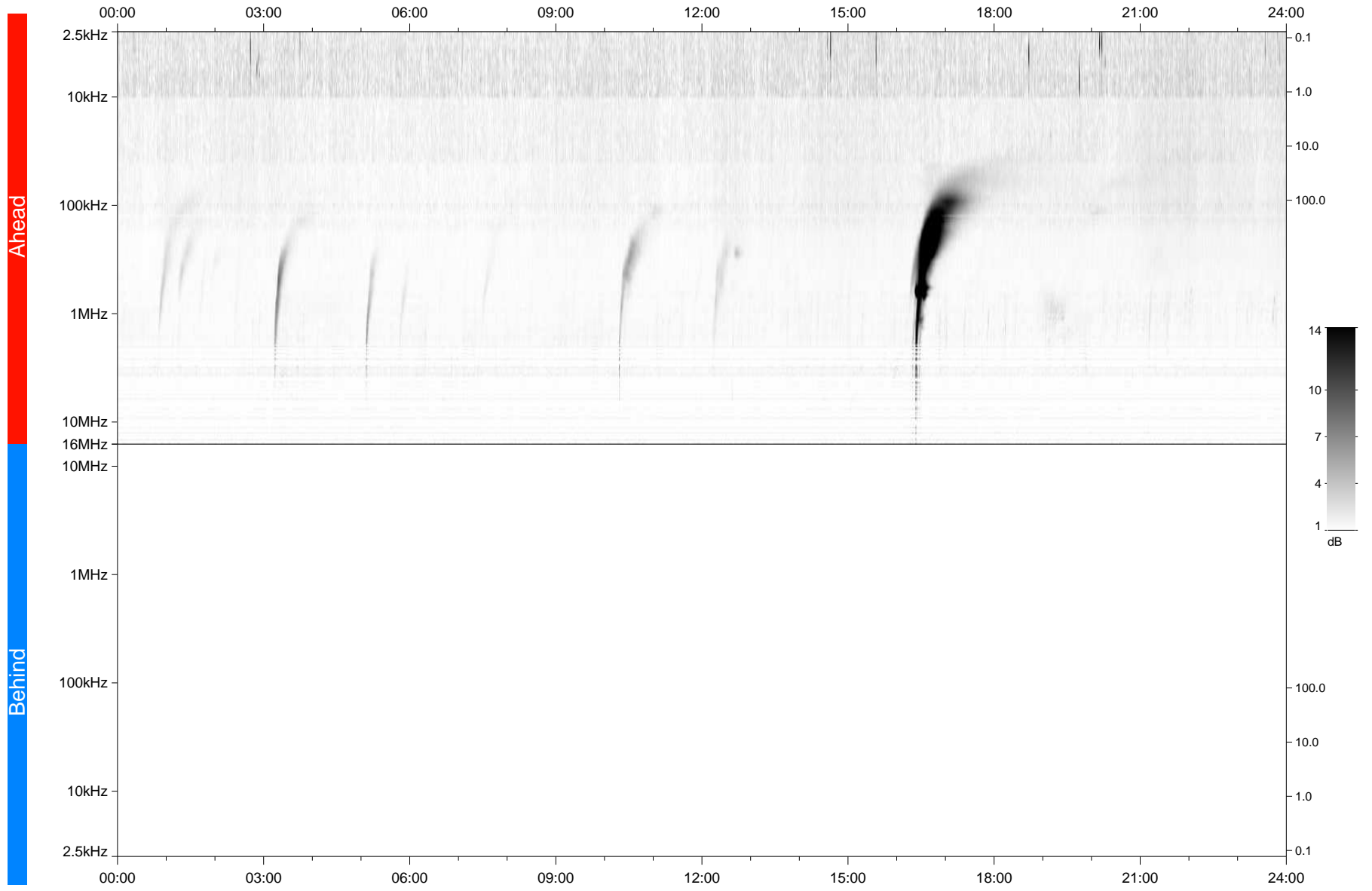


STEREO/WAVES Daily Summary - 20-Jul-2021 (DOY 201)

Ahead source file: swaves_ahead_2021_201_1_05.fin
Ahead PSE Angle: -45.9°



Behind PSE Angle: 40.2°
Behind source file: No STEREO-B data

Time (UTC)

file: stereo_swaves_daily-summary_gray_20210720_v04
made by: space.umn.edu on macOS with IDL 8.8.2 on 2022-10-02 17:22:57, with TLib V945 / dynspec V311