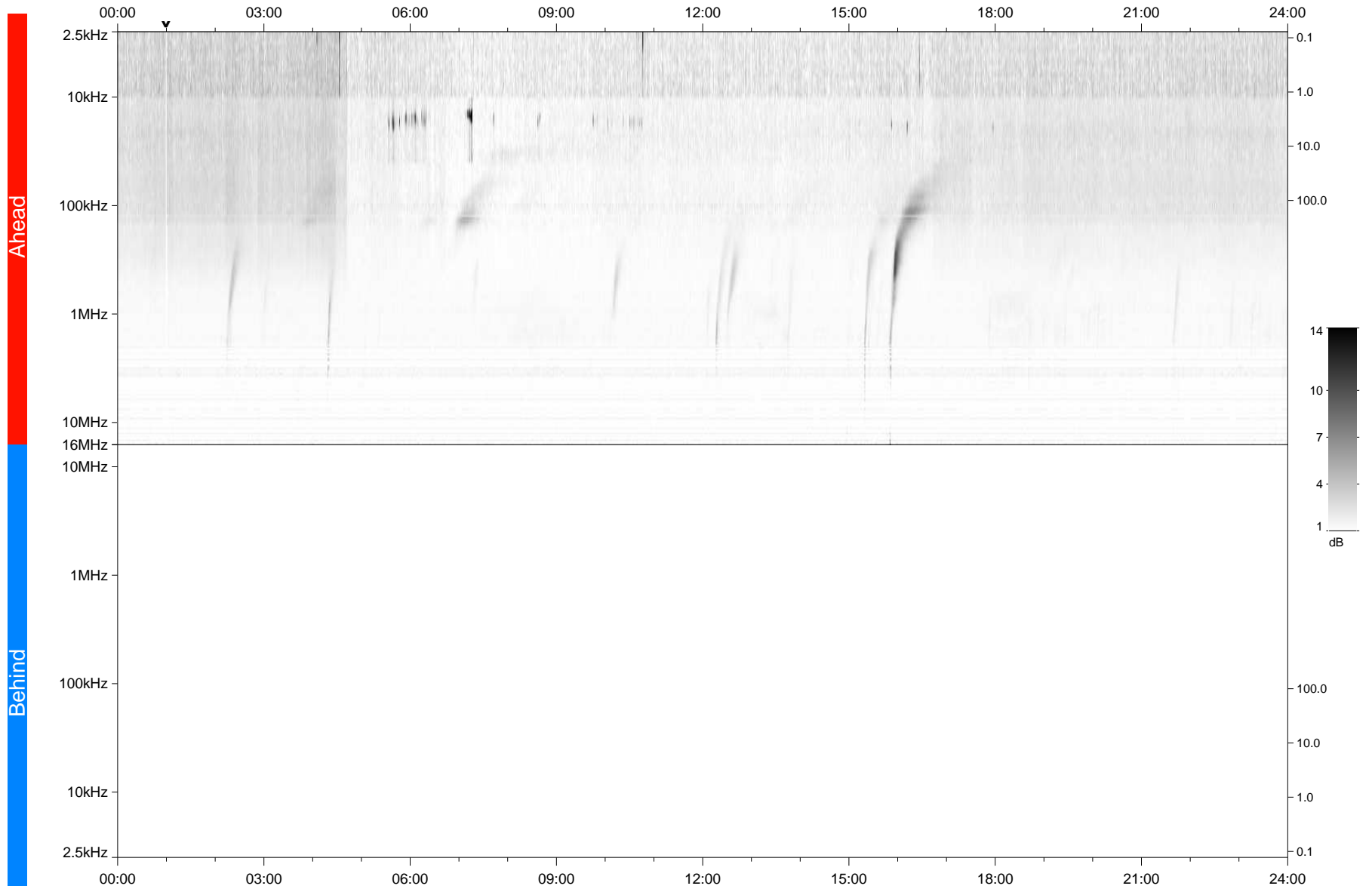


STEREO/WAVES Daily Summary - 19-Jul-2021 (DOY 200)

Ahead source file: swaves_ahead_2021_200_1_05.fin
Ahead PSE Angle: -46.1°



Behind PSE Angle: 40.2°
Behind source file: No STEREO-B data

Time (UTC)

file: stereo_swaves_daily-summary_gray_20210719_v03
made by: space.umn.edu on macOS with IDL 8.8.2 on 2022-08-24 18:21:10, with TMLib V945 / dynspec V311