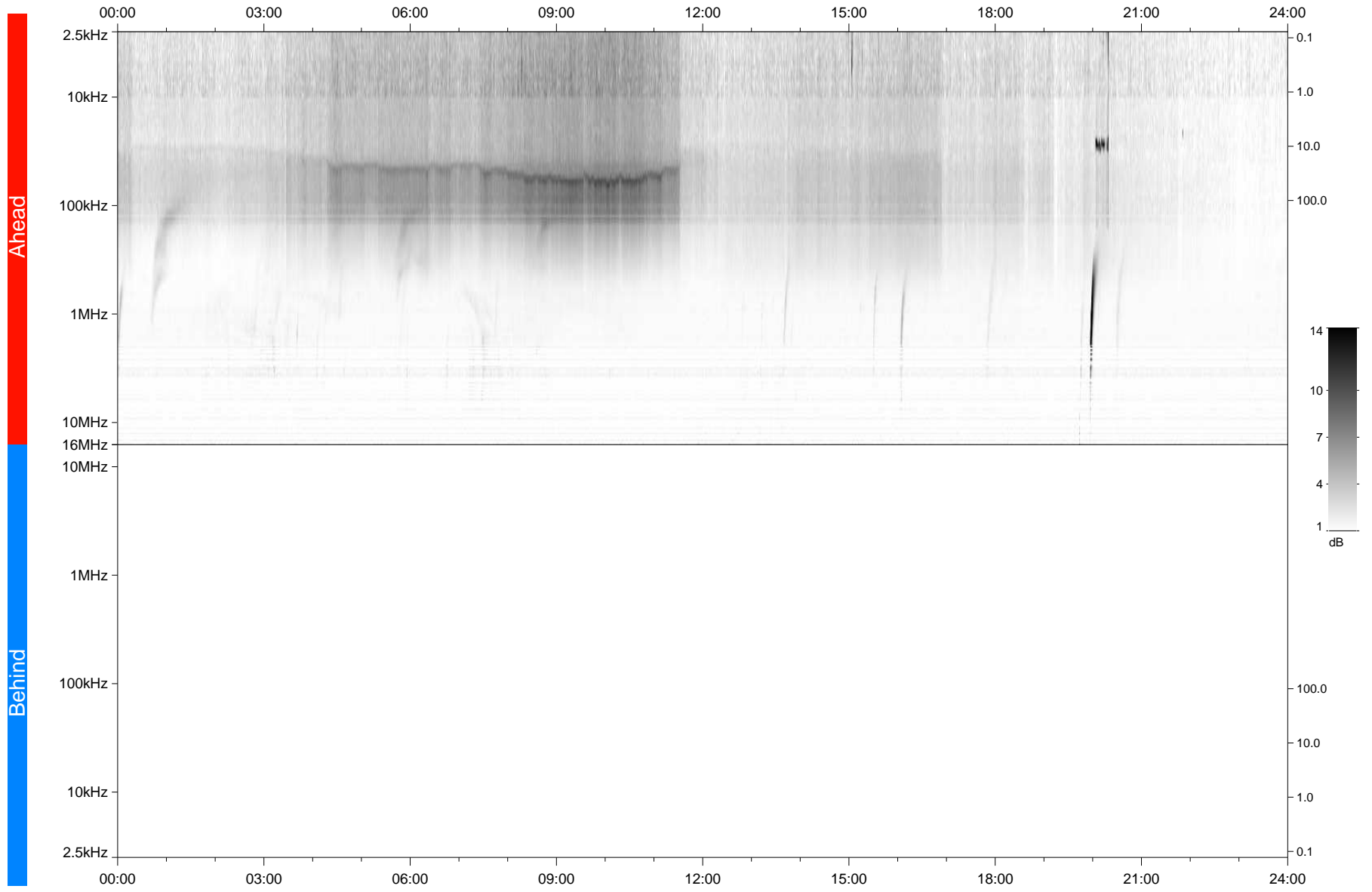


STEREO/WAVES Daily Summary - 18-Jul-2021 (DOY 199)

Ahead source file: swaves_ahead_2021_199_1_06.fin
Ahead PSE Angle: -46.1°



Behind PSE Angle: 40.3°
Behind source file: No STEREO-B data

Time (UTC)

file: stereo_swaves_daily-summary_gray_20210718_v04
made by: space.umn.edu on macOS with TDL 8.8.2 on 2022-10-02 17:19:57, with TLib V945 / dynspec V311