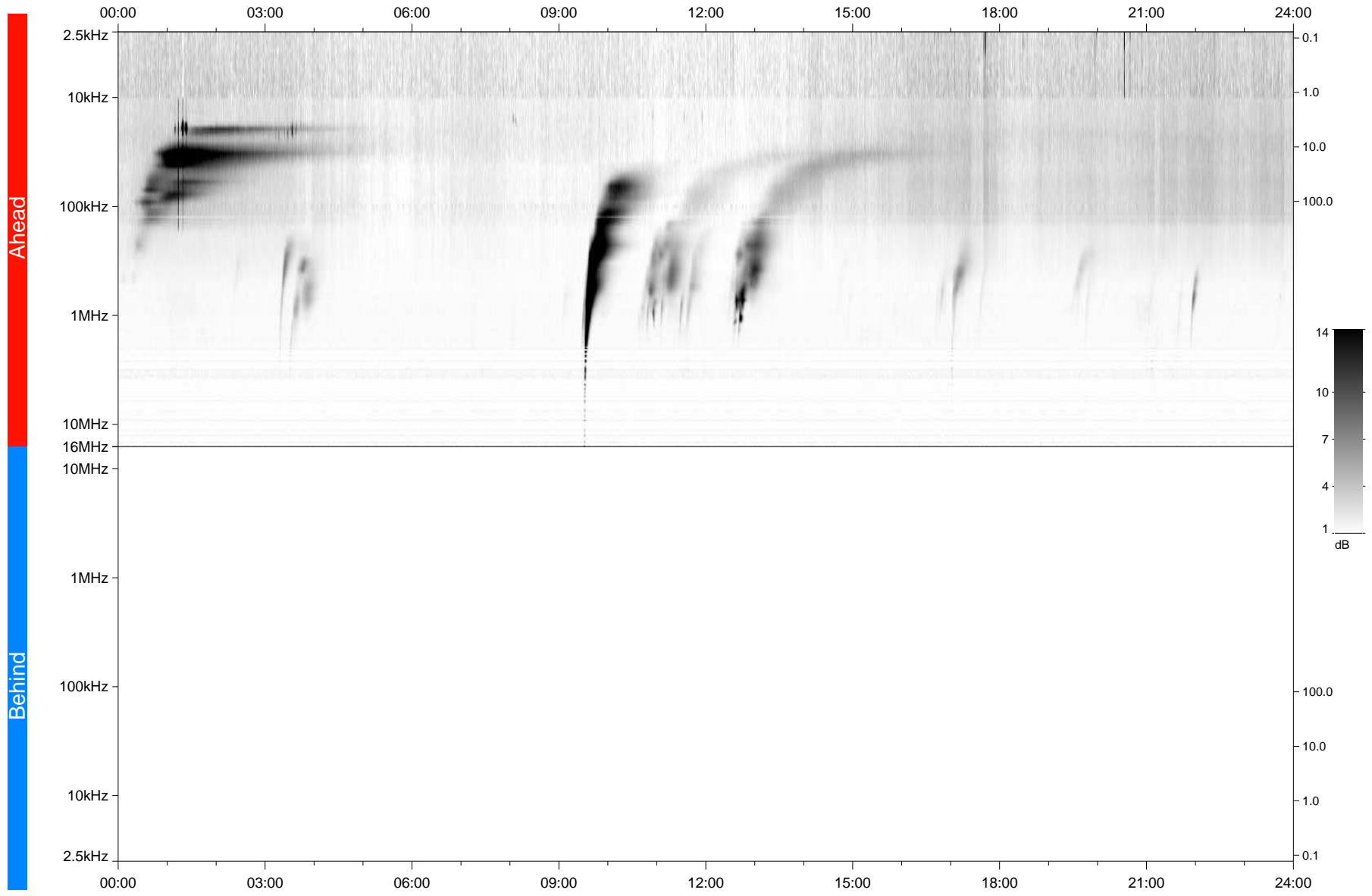


STEREO/WAVES Daily Summary - 28-Jun-2021 (DOY 179)

Ahead source file: swaves_ahead_2021_179_1_05.fin
Ahead PSE Angle: -48.0°



Behind PSE Angle: 42.3°
Behind source file: No STEREO-B data

Time (UTC)

file: stereo_swaves_daily-summary_gray_20210628_v04
made by: space.umn.edu on macOS with TDL 8.8.2 on 2022-10-02 16:50:00, with TLib V945 / dynspec V311