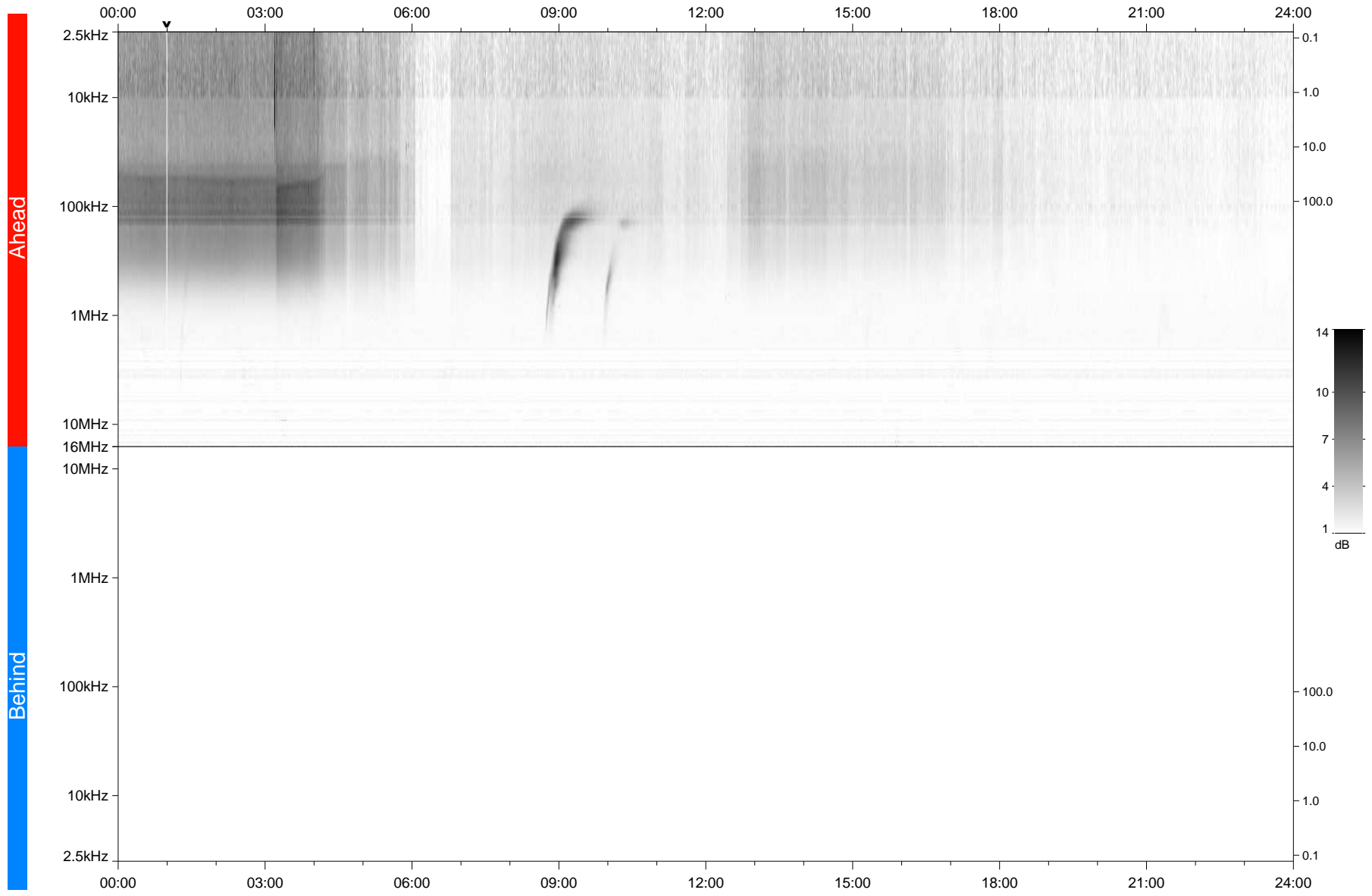


STEREO/WAVES Daily Summary - 27-Jun-2021 (DOY 178)

Ahead source file: swaves_ahead_2021_178_1_05.fin
Ahead PSE Angle: -48.1°



Behind PSE Angle: 42.3°
Behind source file: No STEREO-B data

Time (UTC)

file: stereo_swaves_daily-summary_gray_20210627_v04
made by: space.umn.edu on macOS with IDL 8.8.2 on 2022-10-02 16:48:30, with TLib V945 / dynspec V311