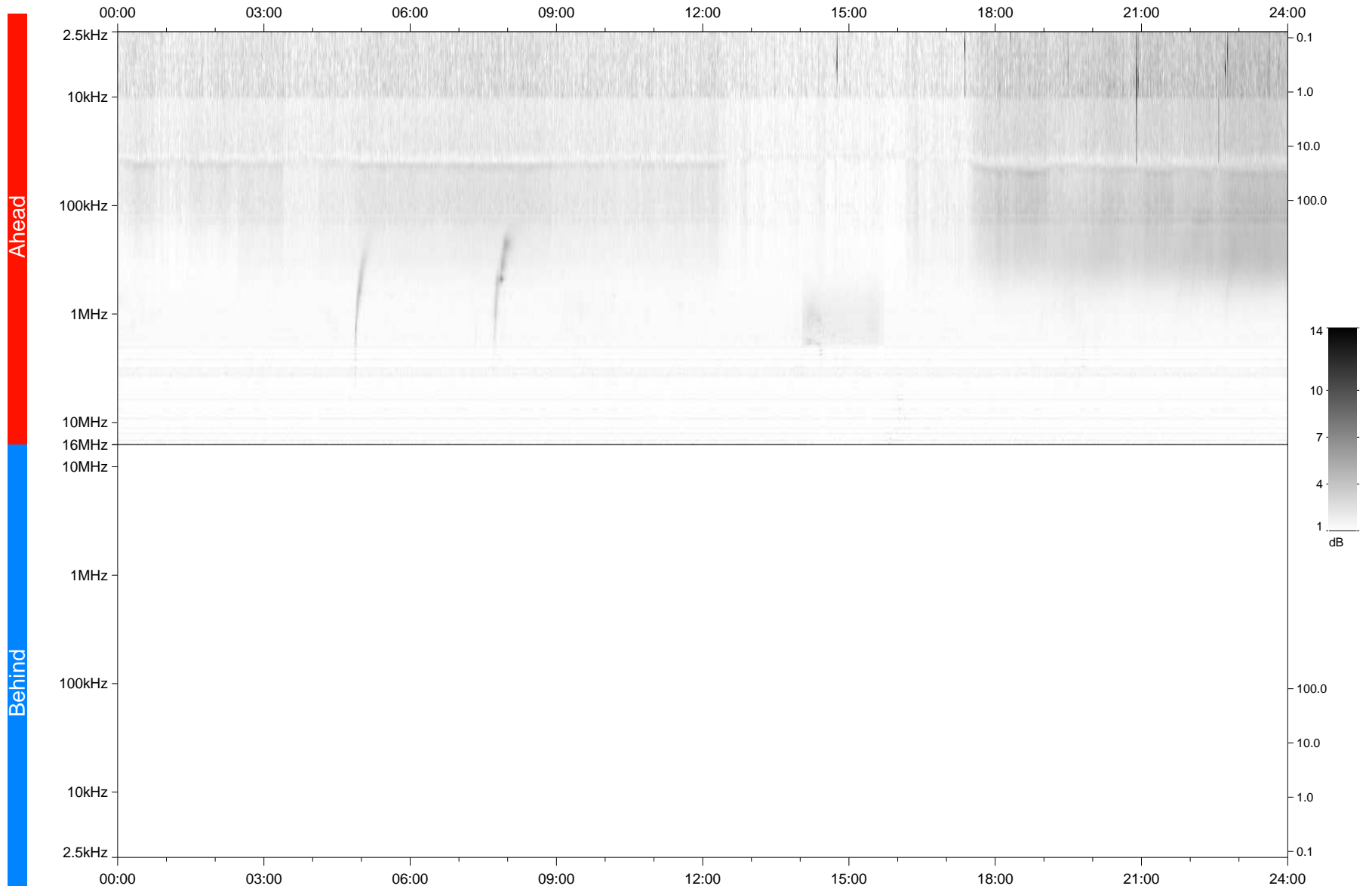


STEREO/WAVES Daily Summary - 26-Jun-2021 (DOY 177)

Ahead source file: swaves_ahead_2021_177_1_05.fin
Ahead PSE Angle: -48.2°



Behind PSE Angle: 42.5°
Behind source file: No STEREO-B data

Time (UTC)

file: stereo_swaves_daily-summary_gray_20210626_v03
made by: space.umn.edu on macOS with IDL 8.8.2 on 2022-08-24 17:49:31, with TMLib V945 / dynspec V311