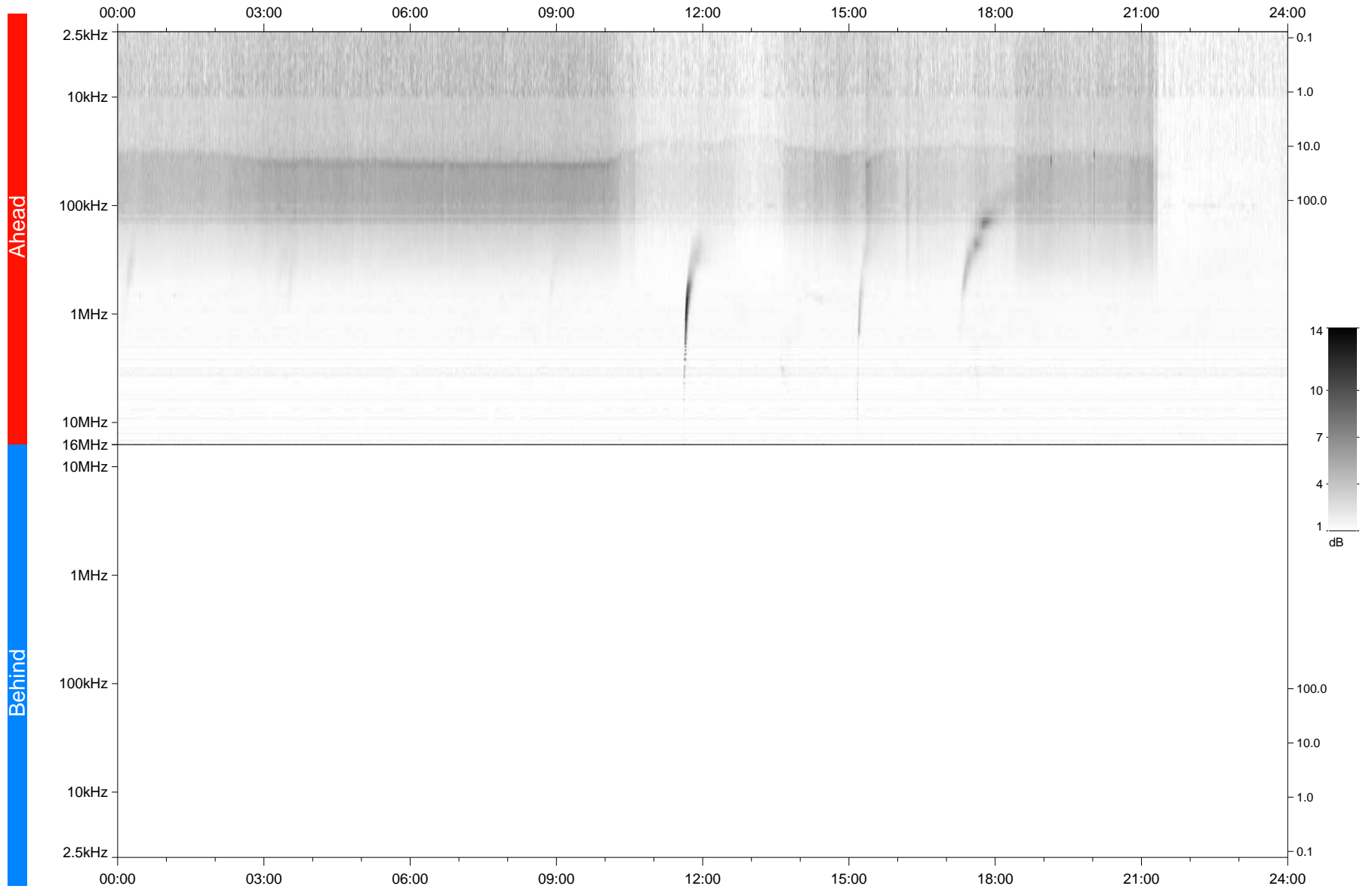


STEREO/WAVES Daily Summary - 24-Jun-2021 (DOY 175)

Ahead source file: swaves_ahead_2021_175_1_06.fin
Ahead PSE Angle: -48.4°



Behind PSE Angle: 42.6°
Behind source file: No STEREO-B data

Time (UTC)

file: stereo_swaves_daily-summary_gray_20210624_v04
made by: space.umn.edu on macOS with IDL 8.8.2 on 2022-10-02 16:44:00, with TLib V945 / dynspec V311