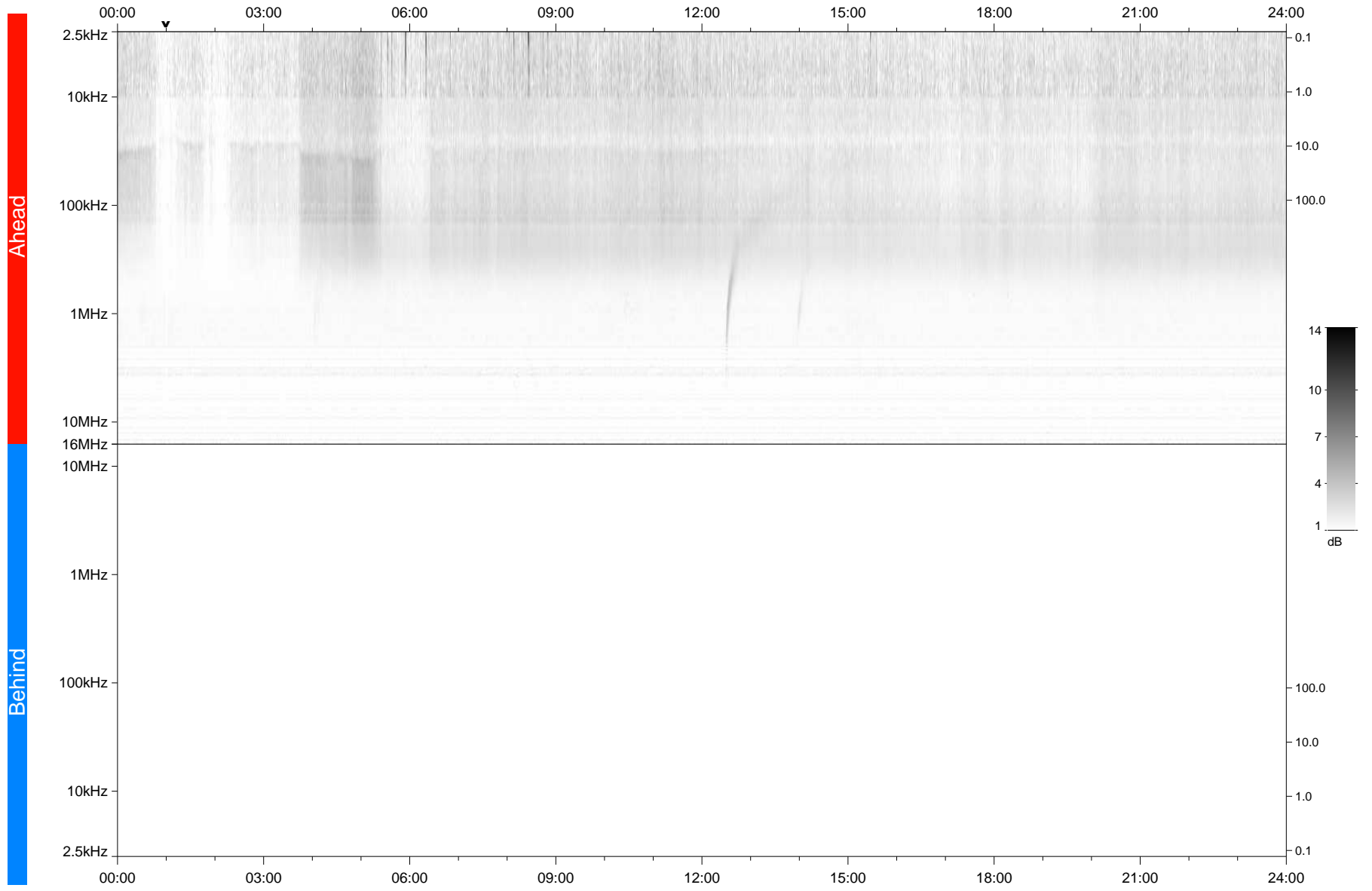


STEREO/WAVES Daily Summary - 21-Jun-2021 (DOY 172)

Ahead source file: swaves_ahead_2021_172_1_06.fin
Ahead PSE Angle: -48.7°



Behind PSE Angle: 42.9°
Behind source file: No STEREO-B data

Time (UTC)

file: stereo_swaves_daily-summary_gray_20210621_v04
made by: space.umn.edu on macOS with IDL 8.8.2 on 2022-10-02 16:39:29, with TMLib V945 / dynspec V311