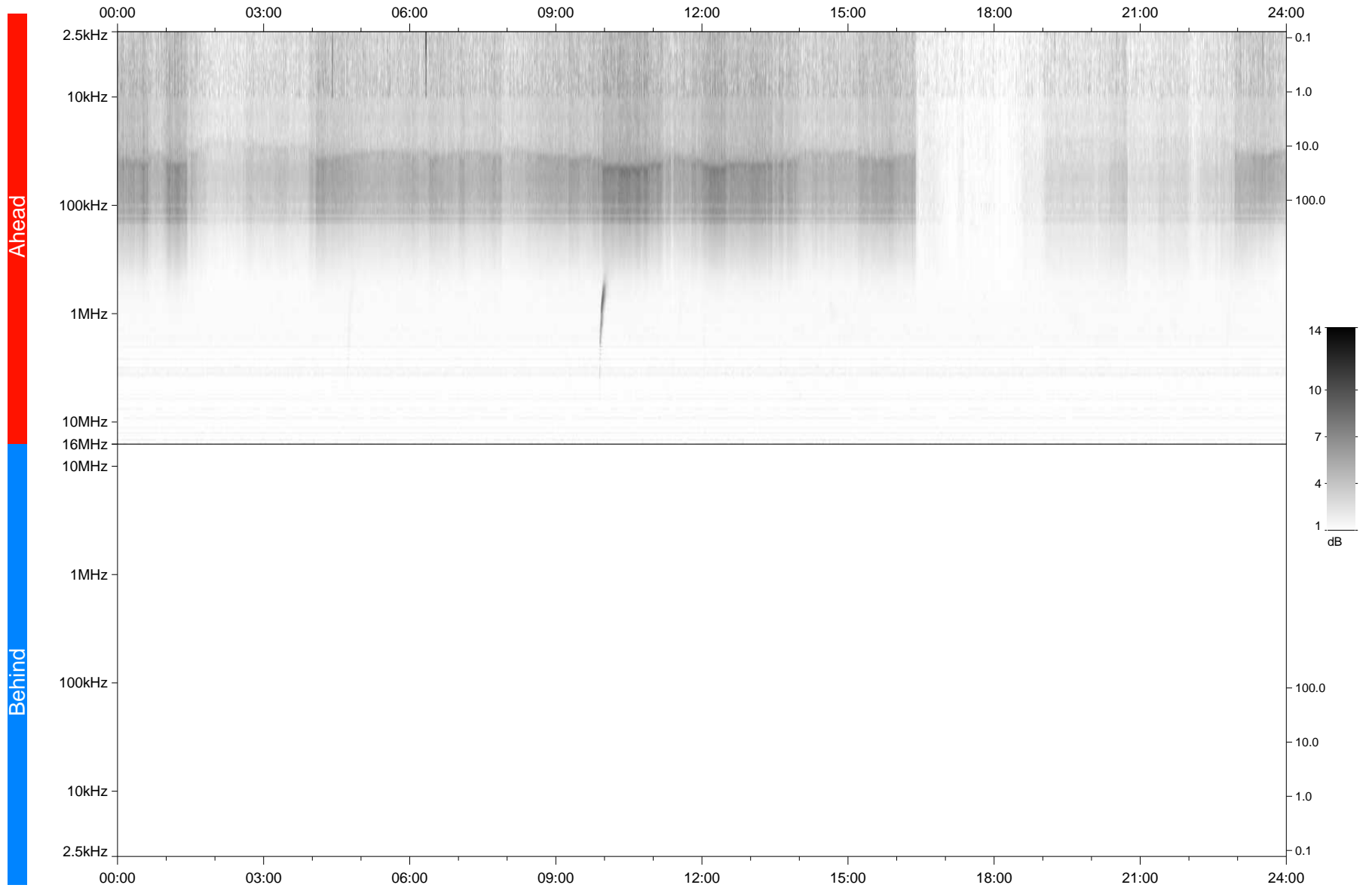


STEREO/WAVES Daily Summary - 20-Jun-2021 (DOY 171)

Ahead source file: swaves_ahead_2021_171_1_06.fin
Ahead PSE Angle: -48.8°



Behind PSE Angle: 43.0°
Behind source file: No STEREO-B data

Time (UTC)

file: stereo_swaves_daily-summary_gray_20210620_v04
made by: space.umn.edu on macOS with IDL 8.8.2 on 2022-10-02 16:38:00, with TLib V945 / dynspec V311