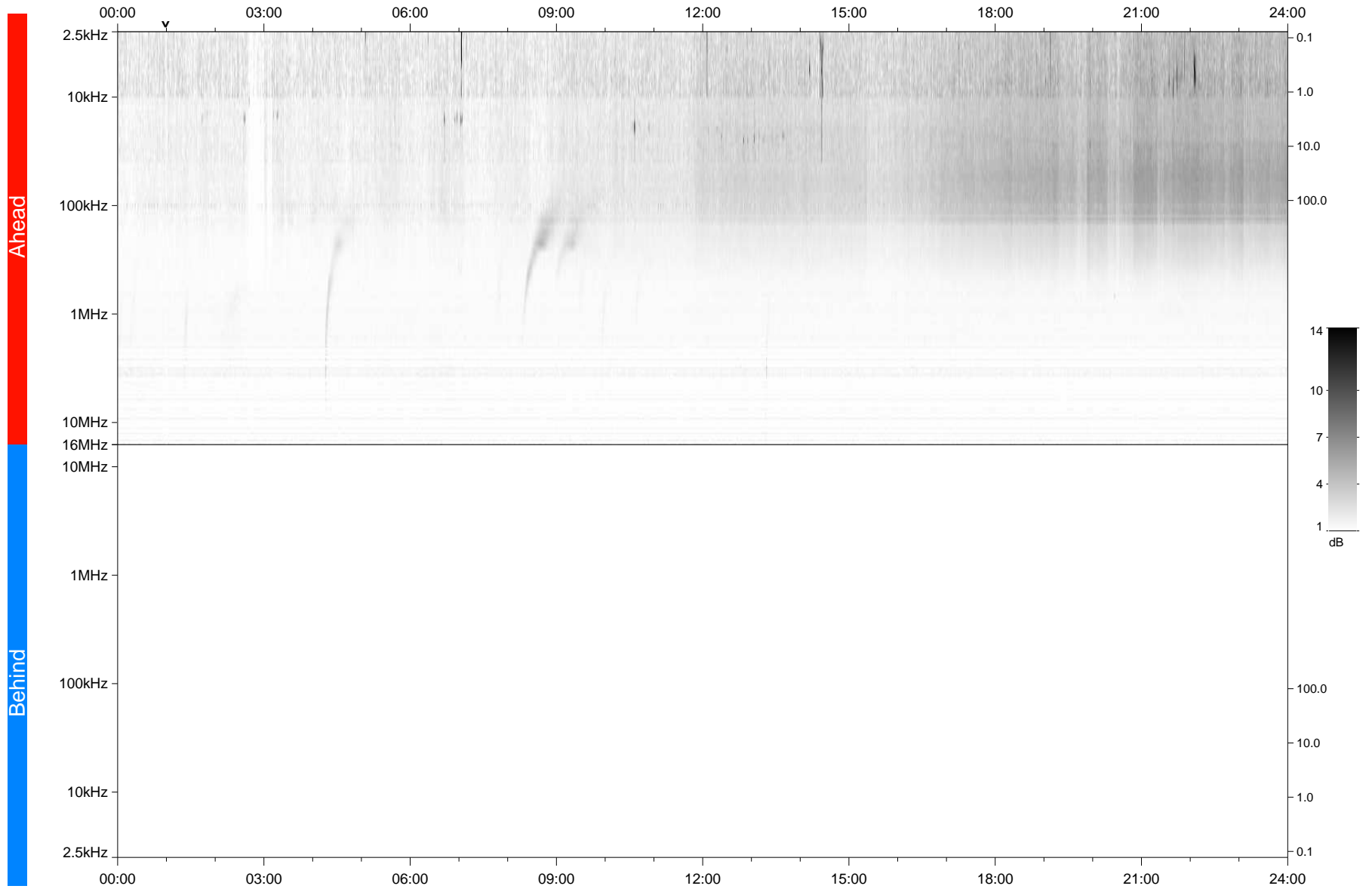


STEREO/WAVES Daily Summary - 17-Jun-2021 (DOY 168)

Ahead source file: swaves_ahead_2021_168_1_05.fin
Ahead PSE Angle: -49.0°



Behind PSE Angle: 43.4°
Behind source file: No STEREO-B data

Time (UTC)

file: stereo_swaves_daily-summary_gray_20210617_v03
made by: space.umn.edu on macOS with IDL 8.8.2 on 2022-08-24 17:37:15, with TMLib V945 / dynspec V311