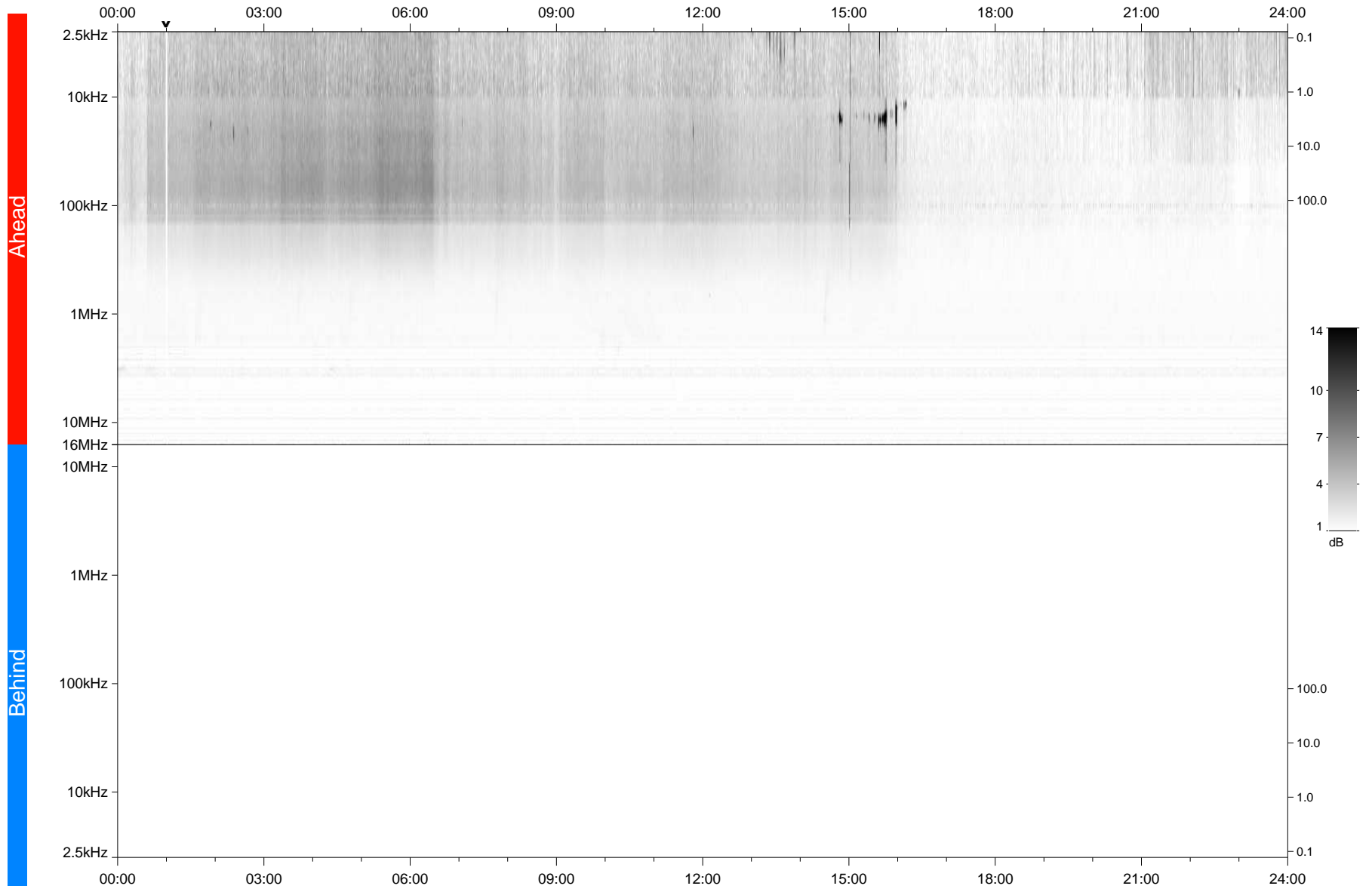


STEREO/WAVES Daily Summary - 15-Jun-2021 (DOY 166)

Ahead source file: swaves_ahead_2021_166_1_05.fin
Ahead PSE Angle: -49.2°



Behind PSE Angle: 43.6°
Behind source file: No STEREO-B data

Time (UTC)

file: stereo_swaves_daily-summary_gray_20210615_v04
made by: space.umn.edu on macOS with TDL 8.8.2 on 2022-10-02 16:30:33, with TLib V945 / dynspec V311