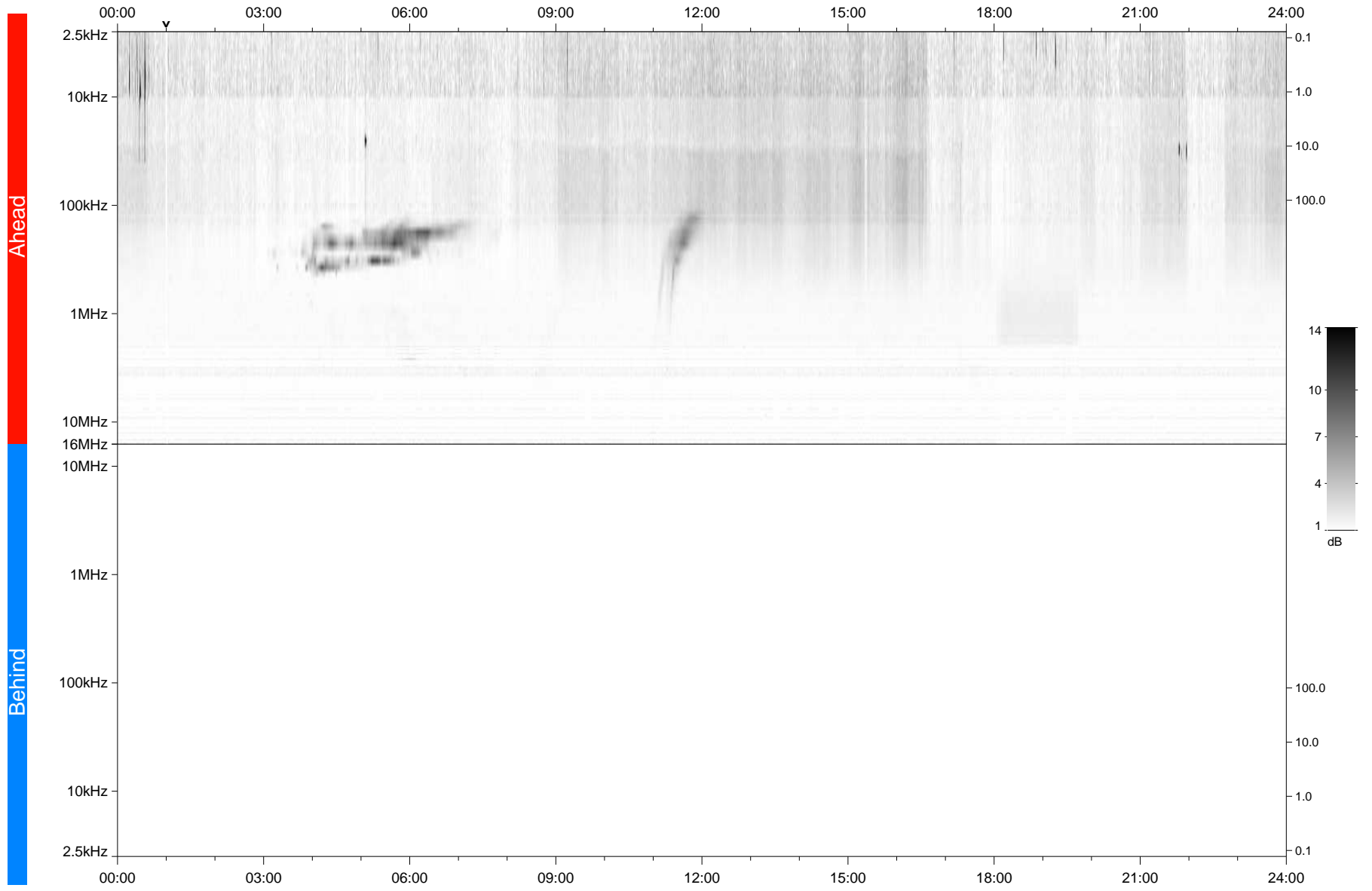


STEREO/WAVES Daily Summary - 11-Jun-2021 (DOY 162)

Ahead source file: swaves_ahead_2021_162_1_05.fin
Ahead PSE Angle: -49.6°



Behind PSE Angle: 44.0°
Behind source file: No STEREO-B data

Time (UTC)

file: stereo_swaves_daily-summary_gray_20210611_v03
made by: space.umn.edu on macOS with TDL 8.8.2 on 2022-08-24 17:29:04, with TLib V945 / dynspec V311