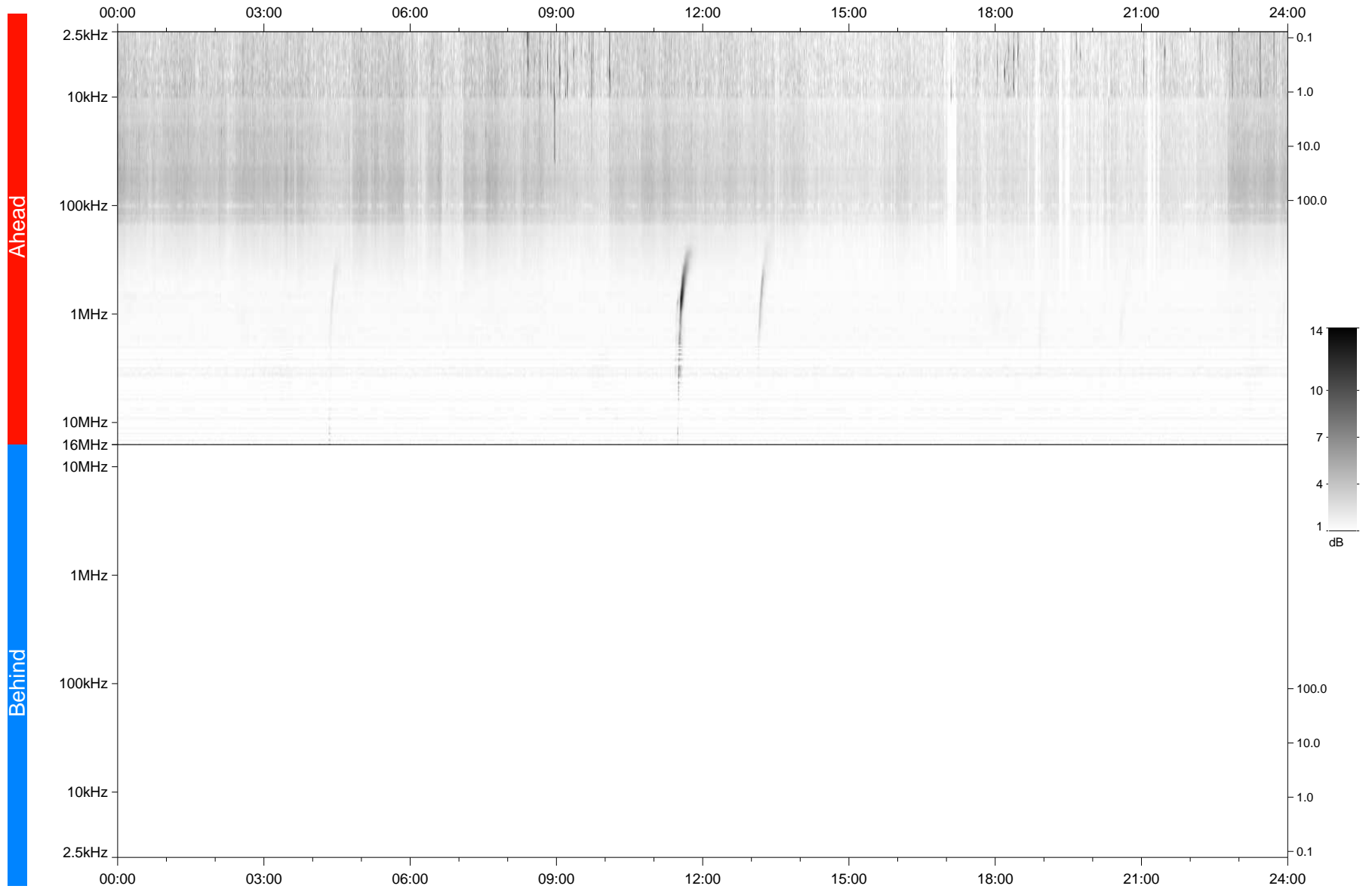


STEREO/WAVES Daily Summary - 06-Jun-2021 (DOY 157)

Ahead source file: swaves_ahead_2021_157_1_05.fin
Ahead PSE Angle: -50.0°



Behind PSE Angle: 44.5°
Behind source file: No STEREO-B data

Time (UTC)

file: stereo_swaves_daily-summary_gray_20210606_v04
made by: space.umn.edu on macOS with IDL 8.8.2 on 2022-10-02 16:17:04, with TLib V945 / dynspec V311