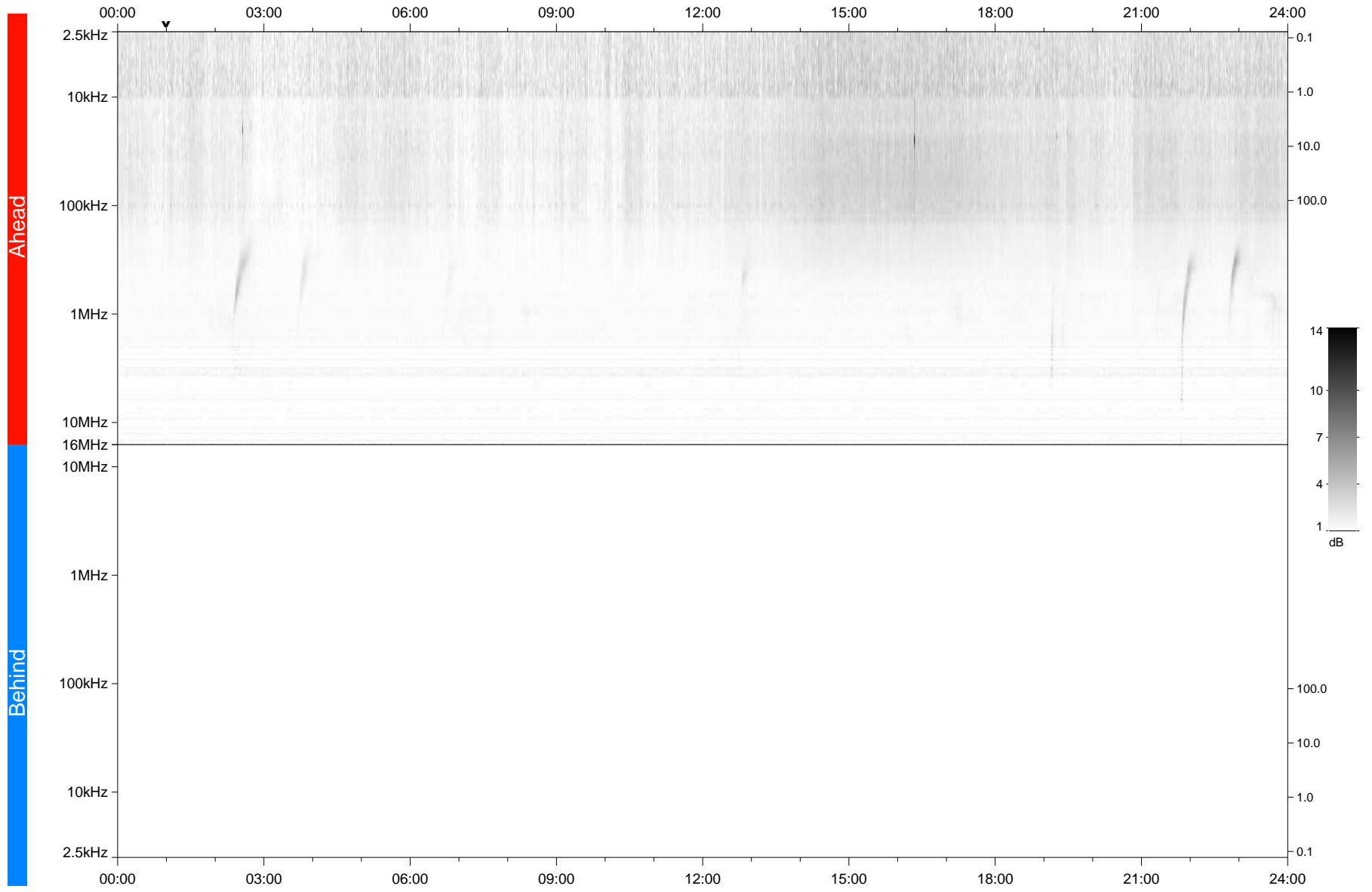


STEREO/WAVES Daily Summary - 05-Jun-2021 (DOY 156)

Ahead source file: swaves Ahead_2021_156_1_05.fin
Ahead PSE Angle: -50.1°



Behind PSE Angle: 44.5°
Behind source file: No STEREO-B data

Time (UTC)

file: stereo_swaves_daily-summary_gray_20210605_v03
made by: space.umn.edu on macOS with IDL 8.8.2 on 2022-08-24 17:20:53, with TLib V945 / dynspec V311