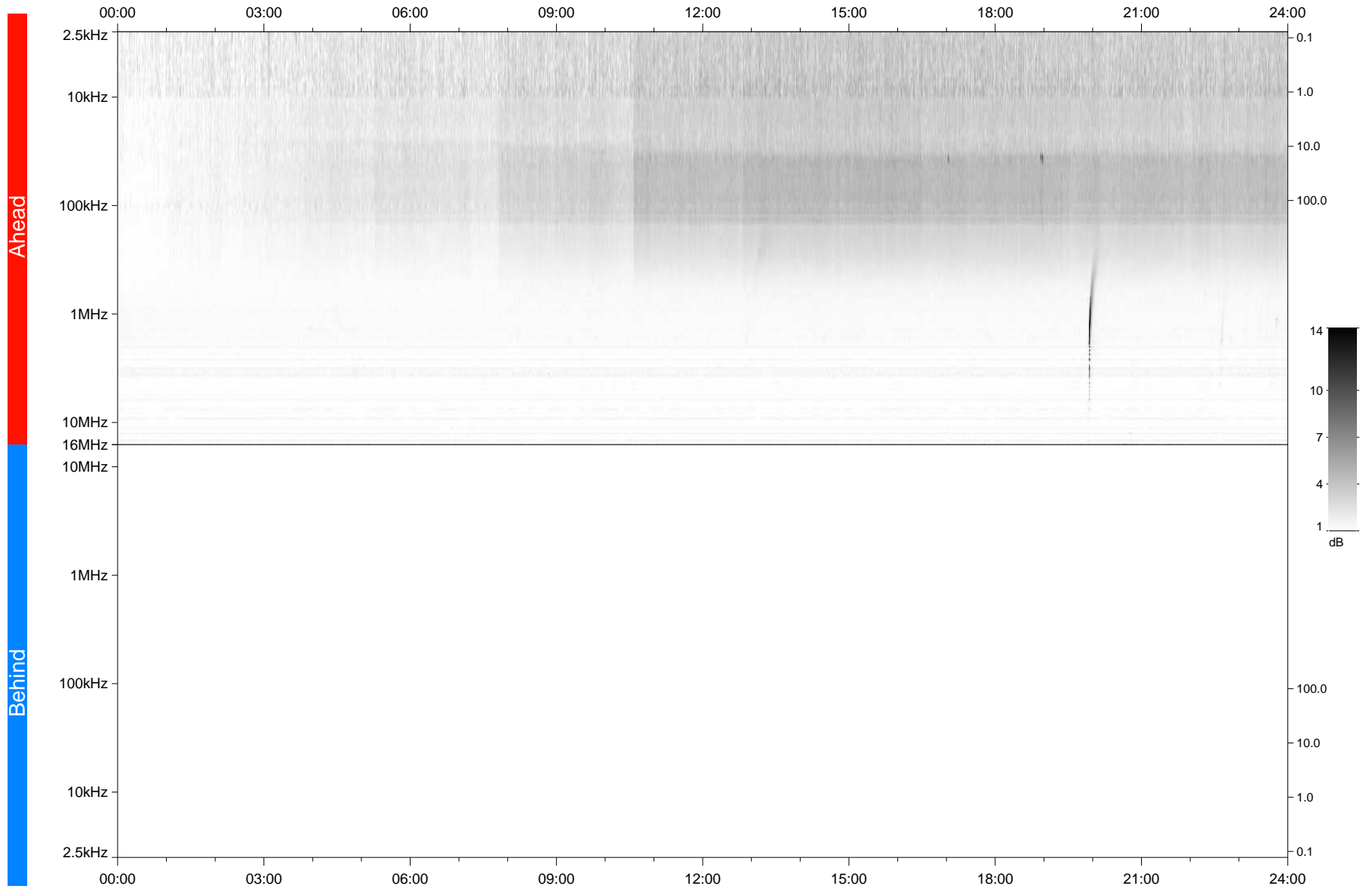


STEREO/WAVES Daily Summary - 02-Jun-2021 (DOY 153)

Ahead source file: swaves_ahead_2021_153_1_07.fin
Ahead PSE Angle: -50.3°



Behind PSE Angle: 44.9°
Behind source file: No STEREO-B data

Time (UTC)

file: stereo_swaves_daily-summary_gray_20210602_v03
made by: space.umn.edu on macOS with TDL 8.8.2 on 2022-08-24 17:16:48, with TLib V945 / dynspec V311