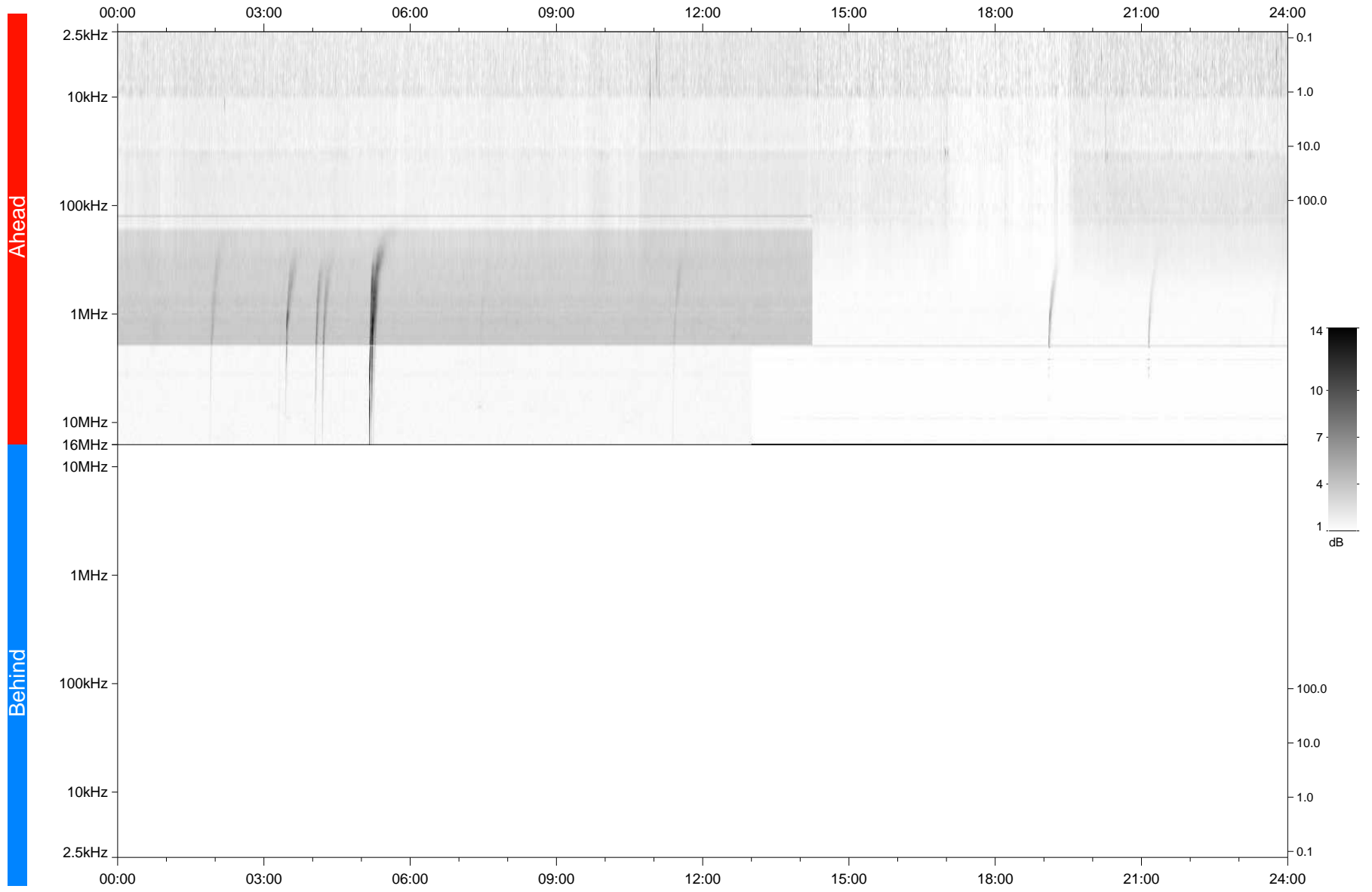


STEREO/WAVES Daily Summary - 31-May-2021 (DOY 151)

Ahead source file: swaves_ahead_2021_151_1_07.fin
Ahead PSE Angle: -50.5°



Behind PSE Angle: 45.1°
Behind source file: No STEREO-B data

Time (UTC)

file: stereo_swaves_daily-summary_gray_20210531_v03
made by: space.umn.edu on macOS with IDL 8.8.2 on 2022-08-24 17:14:04, with TMLib V945 / dynspec V311