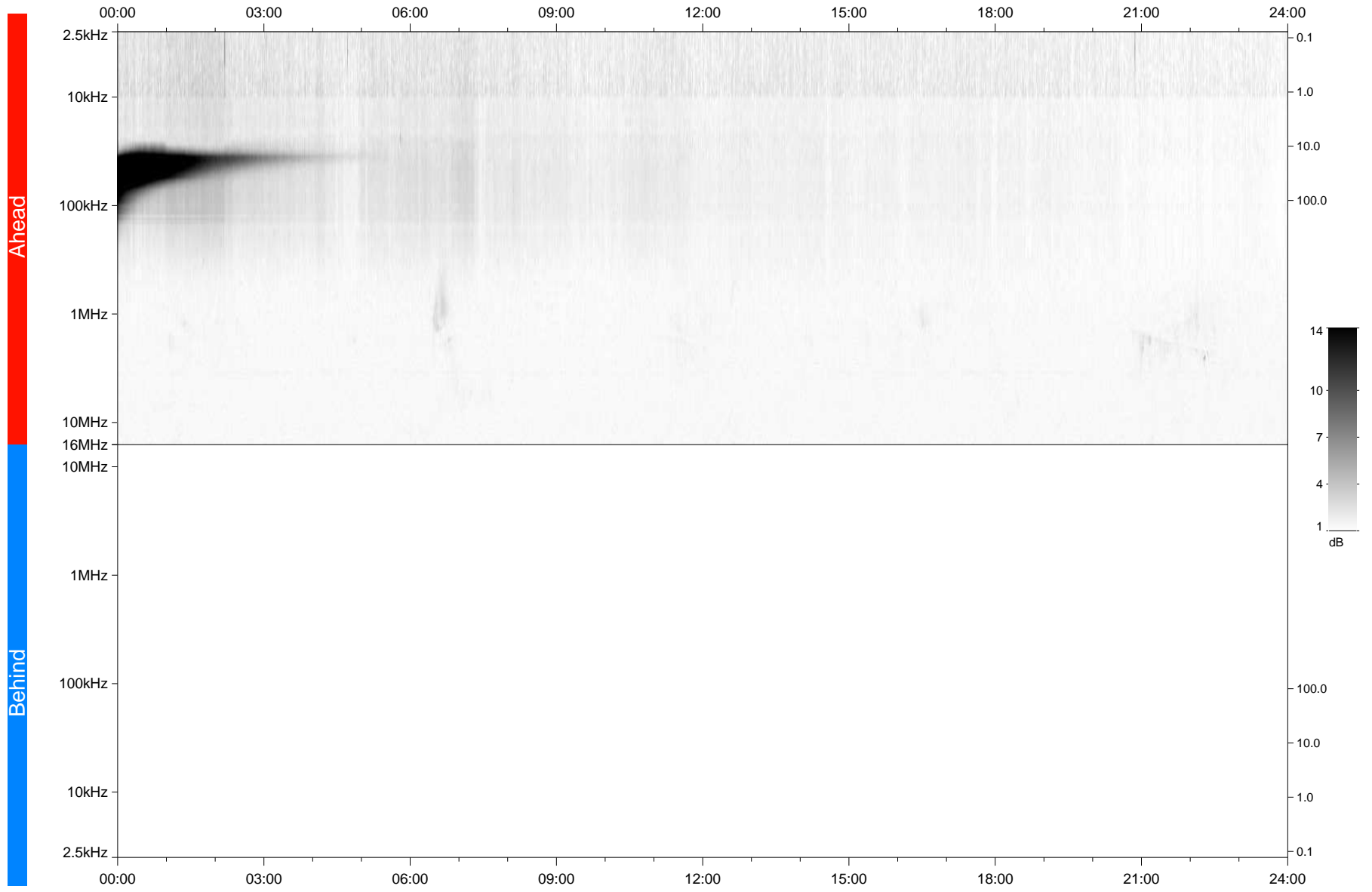


STEREO/WAVES Daily Summary - 29-May-2021 (DOY 149)

Ahead source file: swaves_ahead_2021_149_1_05.fin
Ahead PSE Angle: -50.7°



Behind PSE Angle: 45.3°
Behind source file: No STEREO-B data

Time (UTC)

file: stereo_swaves_daily-summary_gray_20210529_v03
made by: space.umn.edu on macOS with IDL 8.8.2 on 2022-08-24 17:10:47, with TMLib V945 / dynspec V311