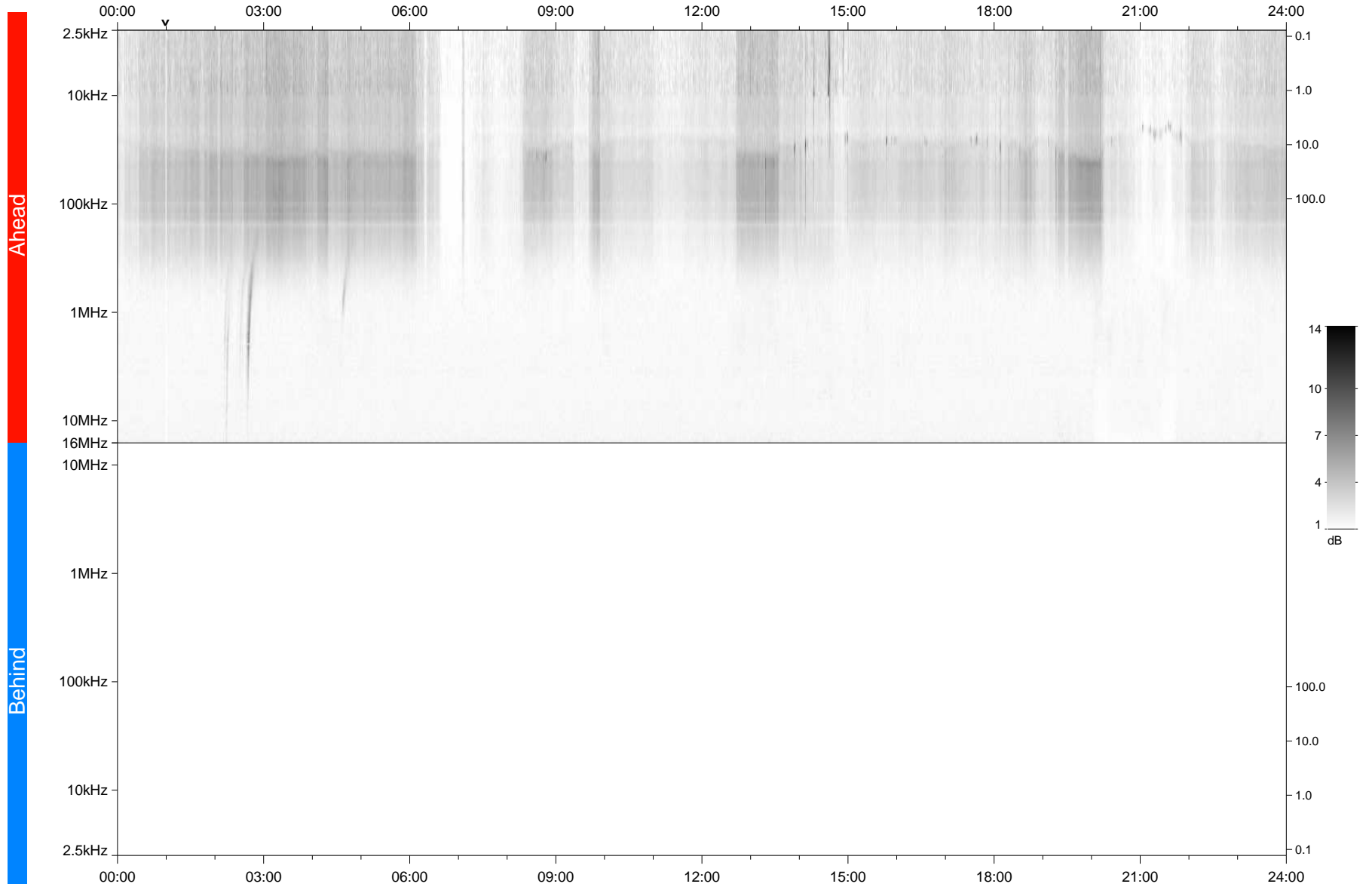


STEREO/WAVES Daily Summary - 26-May-2021 (DOY 146)

Ahead source file: swaves_ahead_2021_146_1_05.fin
Ahead PSE Angle: -50.9°



Behind PSE Angle: 45.6°
Behind source file: No STEREO-B data

Time (UTC)

file: stereo_swaves_daily-summary_gray_20210526_v03
made by: space.umn.edu on macOS with TDL 8.8.2 on 2022-08-24 17:05:37, with TLib V945 / dynspec V311