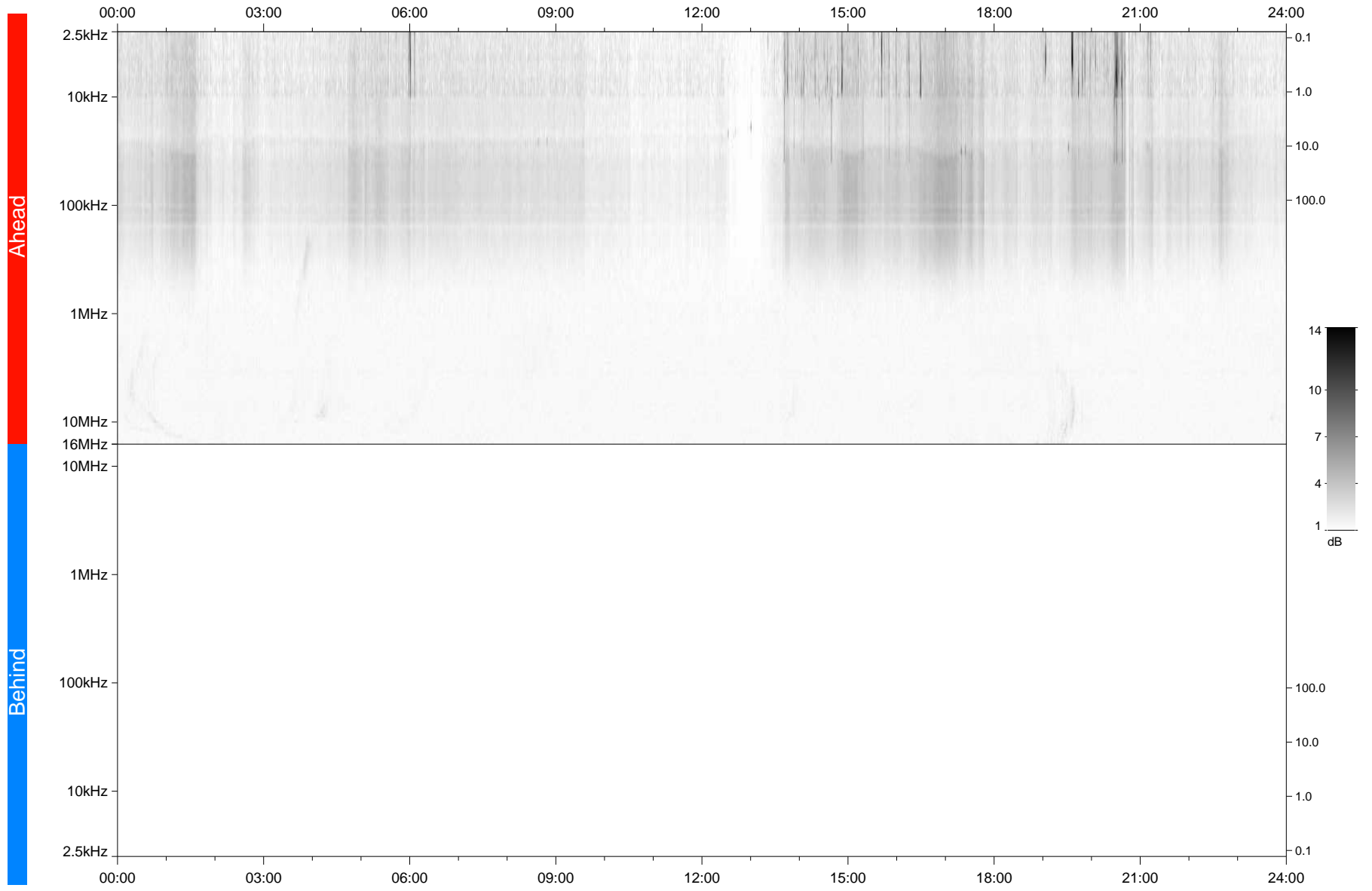


STEREO/WAVES Daily Summary - 25-May-2021 (DOY 145)

Ahead source file: swaves_ahead_2021_145_1_06.fin
Ahead PSE Angle: -51.0°



Behind PSE Angle: 45.8°
Behind source file: No STEREO-B data

Time (UTC)

file: stereo_swaves_daily-summary_gray_20210525_v04
made by: space.umn.edu on macOS with TDL 8.8.2 on 2022-10-02 15:57:04, with TLib V945 / dynspec V311