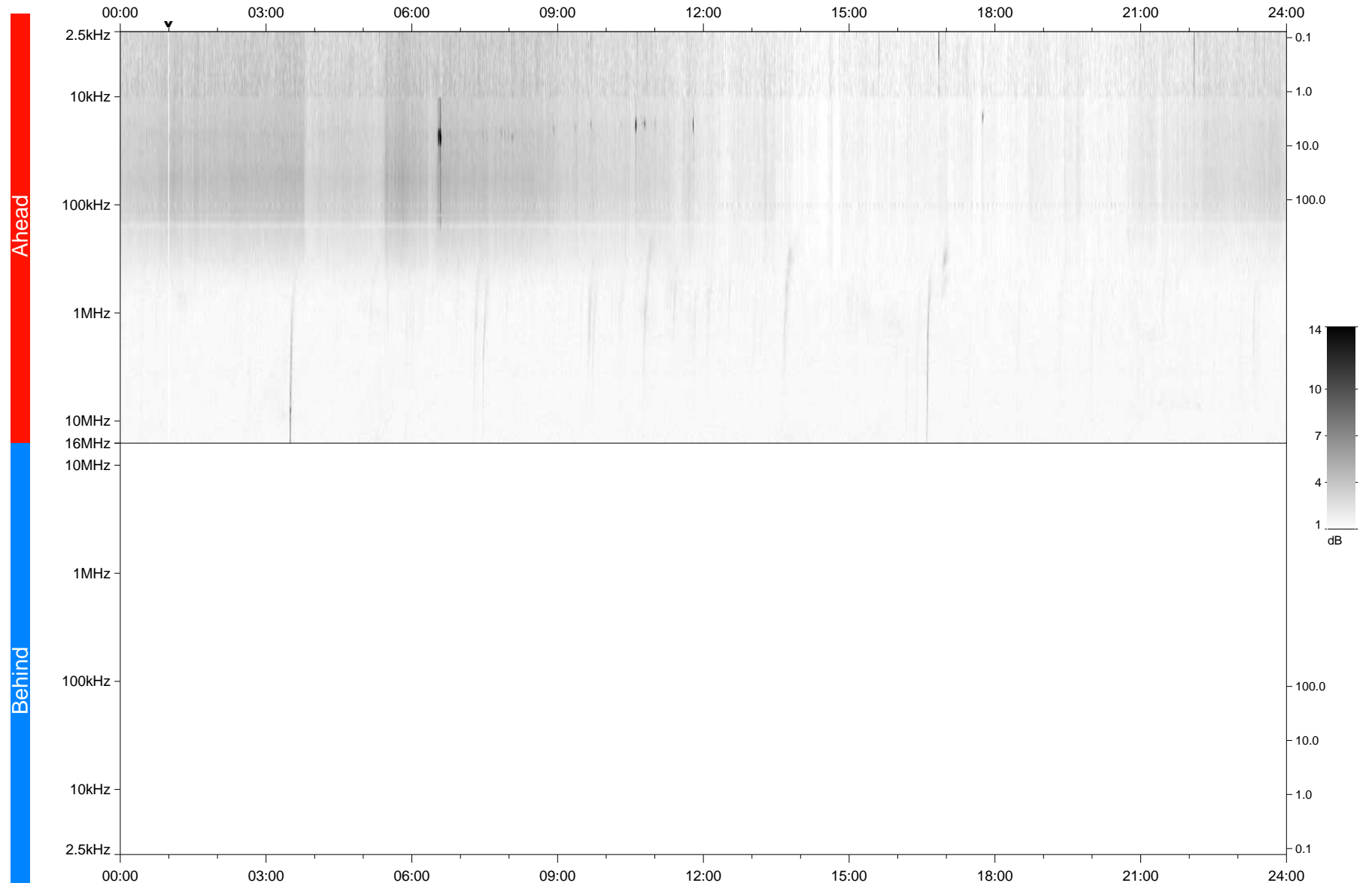


STEREO/WAVES Daily Summary - 16-May-2021 (DOY 136)

Ahead source file: swaves_ahead_2021_136_1_05.fin
Ahead PSE Angle: -51.7°



Behind PSE Angle: 46.6°
Behind source file: No STEREO-B data

Time (UTC)

file: stereo_swaves_daily-summary_gray_20210516_v03
made by: space.umn.edu on macOS with TDL 8.8.2 on 2022-08-24 16:48:25, with Tlib V945 / dynspec V311