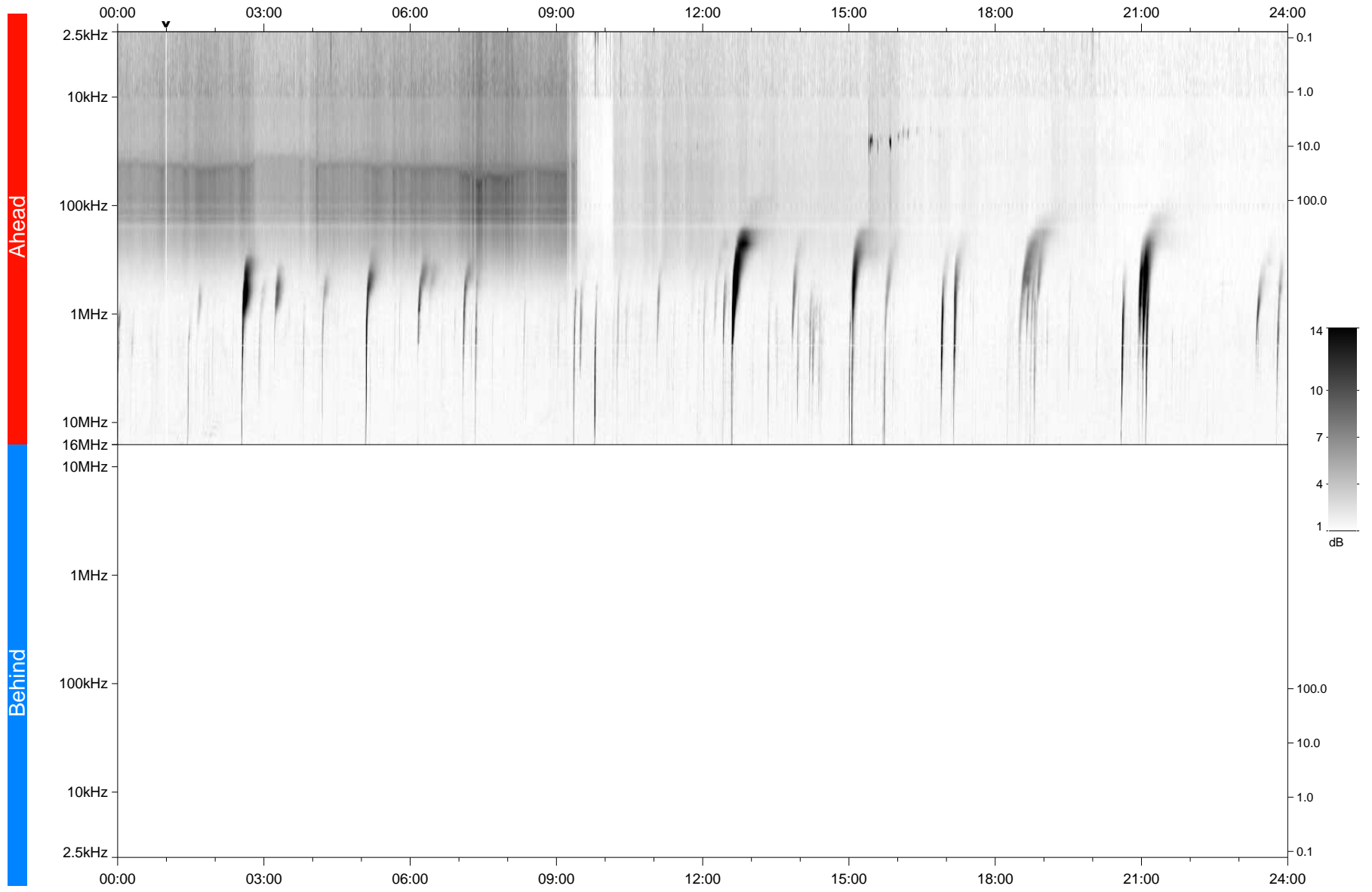


STEREO/WAVES Daily Summary - 08-May-2021 (DOY 128)

Ahead source file: swaves_ahead_2021_128_1_05.fin
Ahead PSE Angle: -52.2°



Behind PSE Angle: 47.6°
Behind source file: No STEREO-B data

Time (UTC)

file: stereo_swaves_daily-summary_gray_20210508_v03
made by: space.umn.edu on macOS with TDL 8.8.2 on 2022-08-24 16:34:45, with TLib V945 / dynspec V311