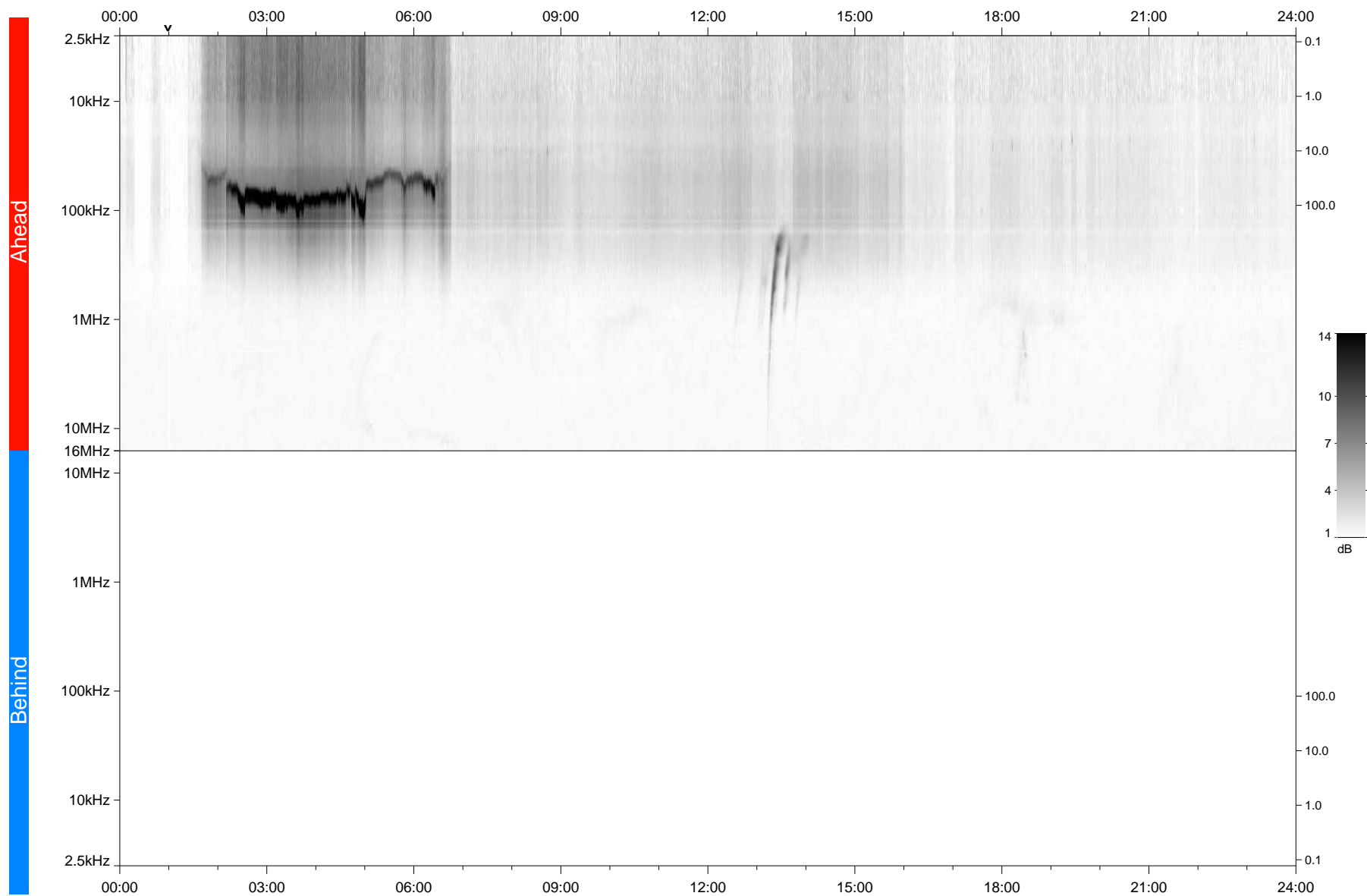


STEREO/WAVES Daily Summary - 30-Apr-2021 (DOY 120)

Ahead source file: swaves_ahead_2021_120_1_05.fin
Ahead PSE Angle: -52.8°



Behind PSE Angle: 48.4°
Behind source file: No STEREO-B data

Time (UTC)

file: stereo_swaves_daily-summary_gray_20210430_v04
made by: space.umn.edu on macOS with IDL 8.8.2 on 2022-10-02 15:10:51, with TMLib V945 / dynspec V311