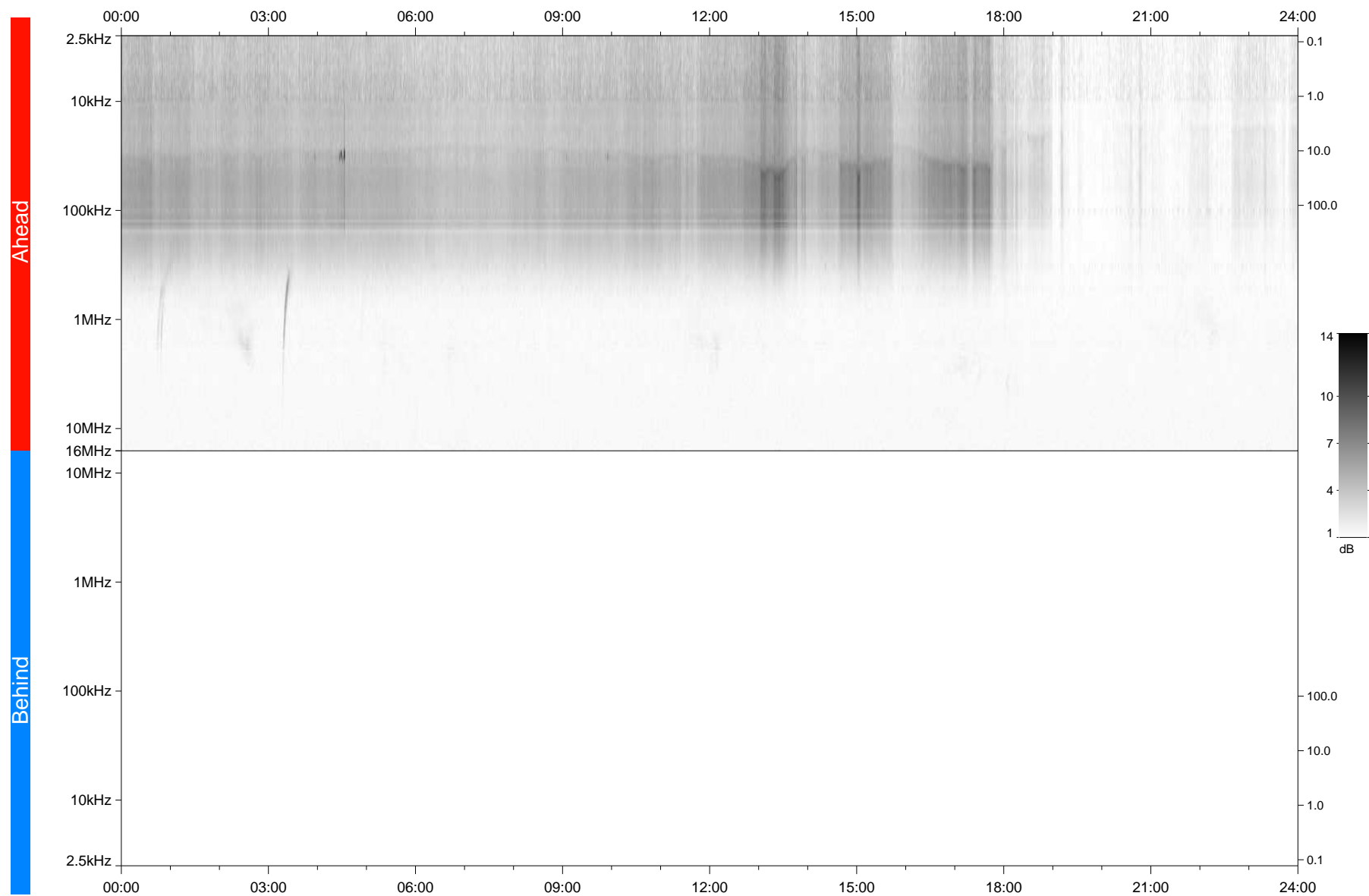


# STEREO/WAVES Daily Summary - 29-Apr-2021 (DOY 119)

Ahead source file: swaves\_ahead\_2021\_119\_1\_05.fin  
Ahead PSE Angle: -52.8°



Behind PSE Angle: 48.5°  
Behind source file: No STEREO-B data

Time (UTC)

file: stereo\_swaves\_daily-summary\_gray\_20210429\_v04  
made by: space.umn.edu on macOS with TDL 8.8.2 on 2022-10-02 15:09:00, with Tlib V945 / dynspec V311