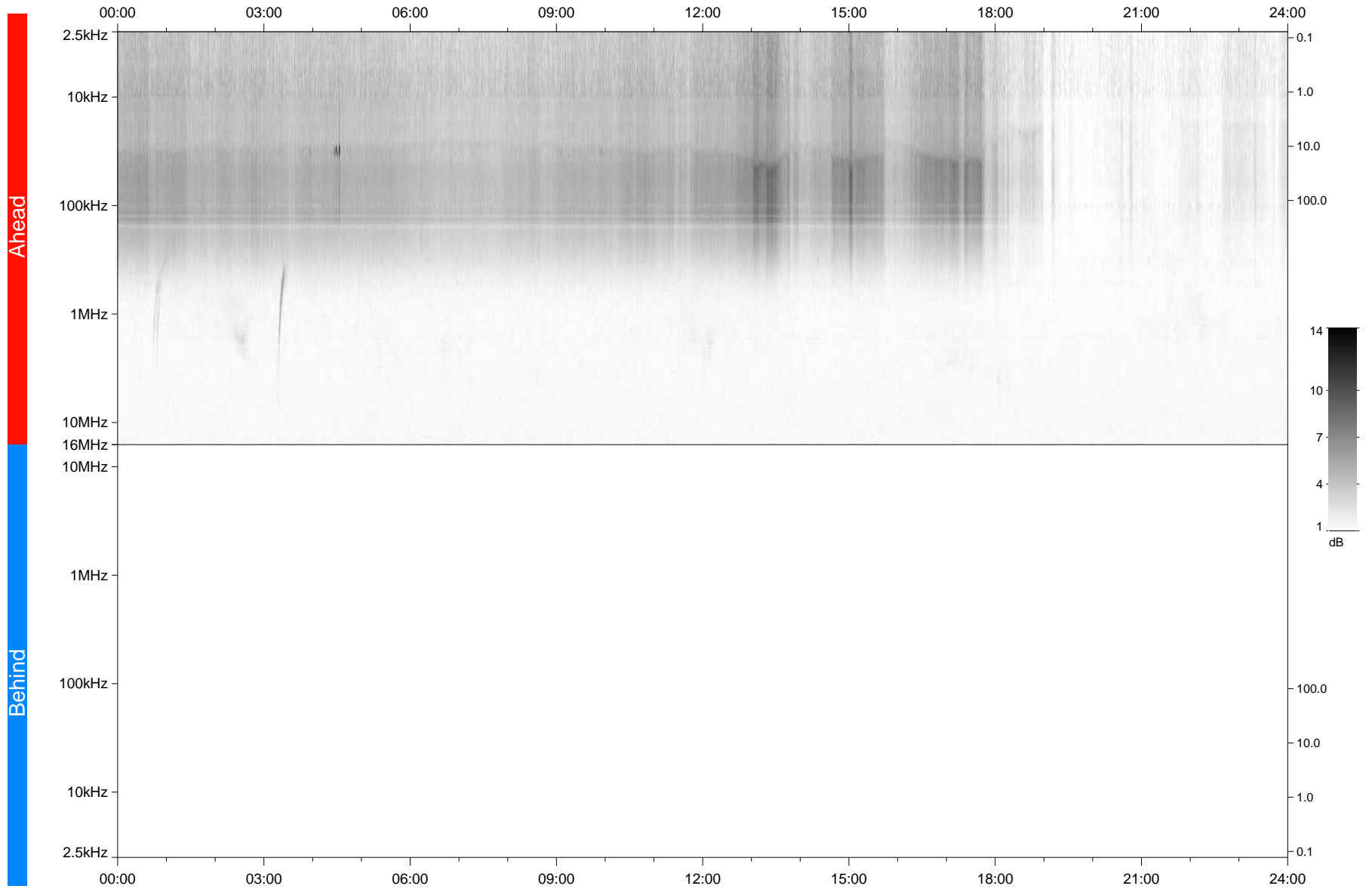


STEREO/WAVES Daily Summary - 29-Apr-2021 (DOY 119)

Ahead source file: swaves_ahead_2021_119_1_05.fin
Ahead PSE Angle: -52.8°



Behind PSE Angle: 48.5°
Behind source file: No STEREO-B data

Time (UTC)

file: stereo_swaves_daily-summary_gray_20210429_v03
made by: space.umn.edu on macOS with TDL 8.8.2 on 2022-08-24 16:19:21, with TLib V945 / dynspec V311