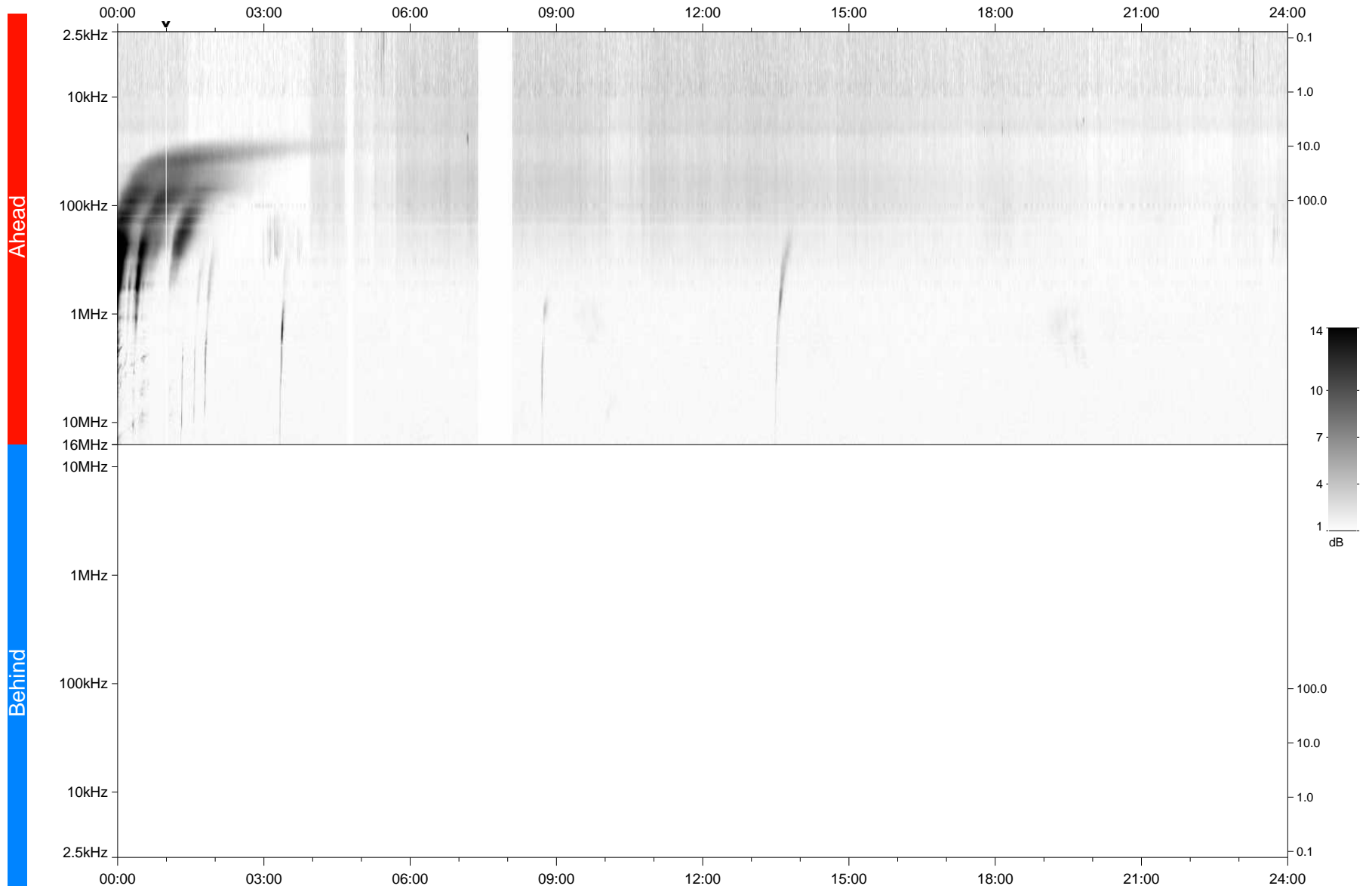


STEREO/WAVES Daily Summary - 20-Apr-2021 (DOY 110)

Ahead source file: swaves_ahead_2021_110_1_07.fin
Ahead PSE Angle: -53.4°



Behind PSE Angle: 49.5°
Behind source file: No STEREO-B data

Time (UTC)

file: stereo_swaves_daily-summary_gray_20210420_v04
made by: space.umn.edu on macOS with IDL 8.8.2 on 2022-10-02 14:52:21, with TLib V945 / dynspec V311