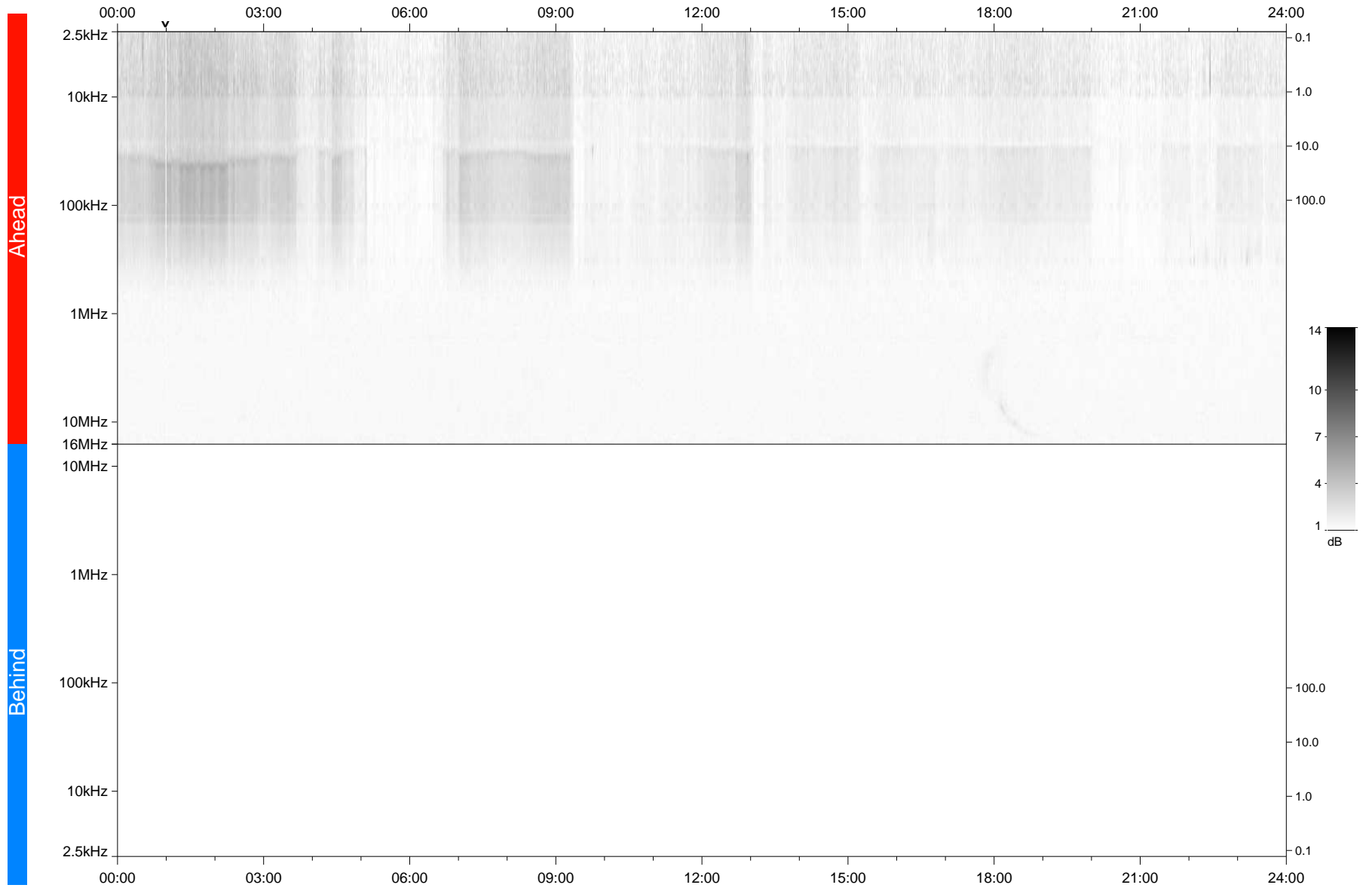


STEREO/WAVES Daily Summary - 10-Apr-2021 (DOY 100)

Ahead source file: swaves_ahead_2021_100_1_05.fin
Ahead PSE Angle: -53.9°



Behind PSE Angle: 50.5°
Behind source file: No STEREO-B data

Time (UTC)

file: stereo_swaves_daily-summary_gray_20210410_v03
made by: space.umn.edu on macOS with TDL 8.8.2 on 2022-08-24 15:47:55, with TLib V945 / dynspec V311