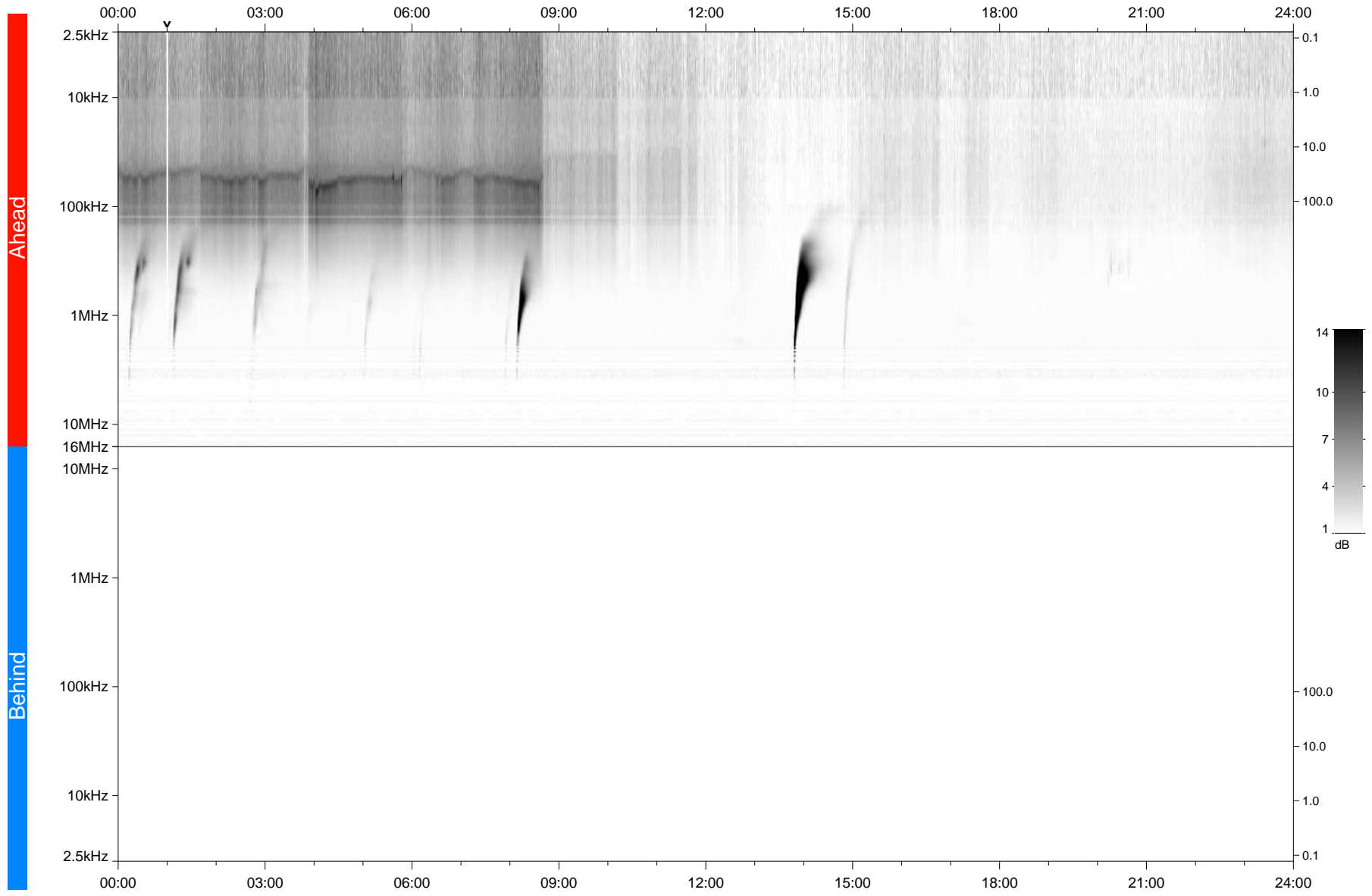


STEREO/WAVES Daily Summary - 01-Mar-2021 (DOY 060)

Ahead source file: swaves_ahead_2021_060_1_05.fin
Ahead PSE Angle: -55.5°



Behind PSE Angle: 54.1°
Behind source file: No STEREO-B data

Time (UTC)

file: stereo_swaves_daily-summary_gray_20210301_v03
made by: space.umn.edu on macOS with IDL 8.8.2 on 2022-08-24 14:46:42, with TLib V945 / dynspec V311