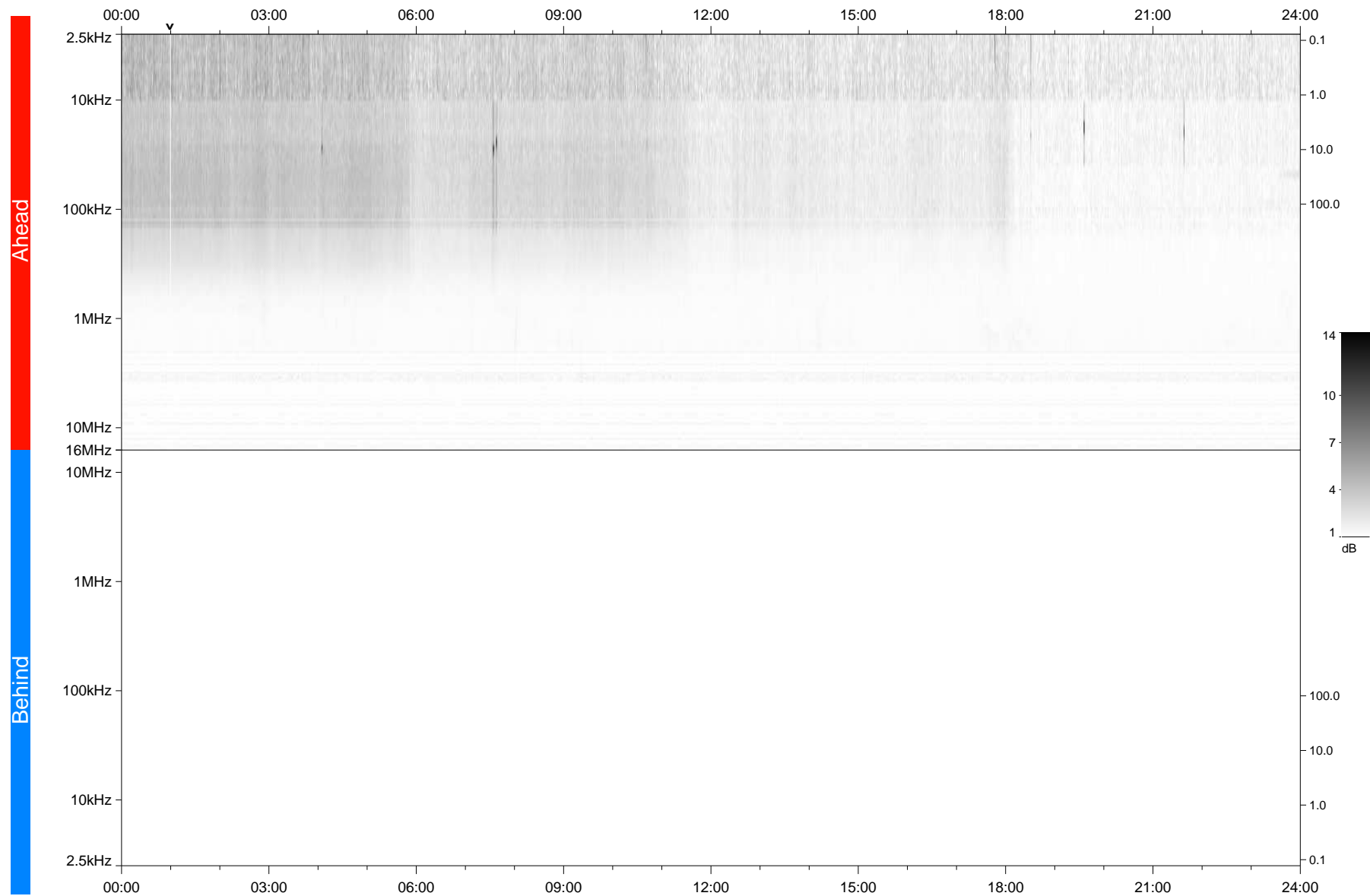


STEREO/WAVES Daily Summary - 17-Feb-2021 (DOY 048)

Ahead source file: swaves_ahead_2021_048_1_05.fin
Ahead PSE Angle: -56.0°



Behind PSE Angle: 54.9°
Behind source file: No STEREO-B data

Time (UTC)

file: stereo_swaves_daily-summary_gray_20210217_v04
made by: space.umn.edu on macOS with TDL 8.8.2 on 2022-10-02 13:11:00, with TLib V945 / dynspec V311