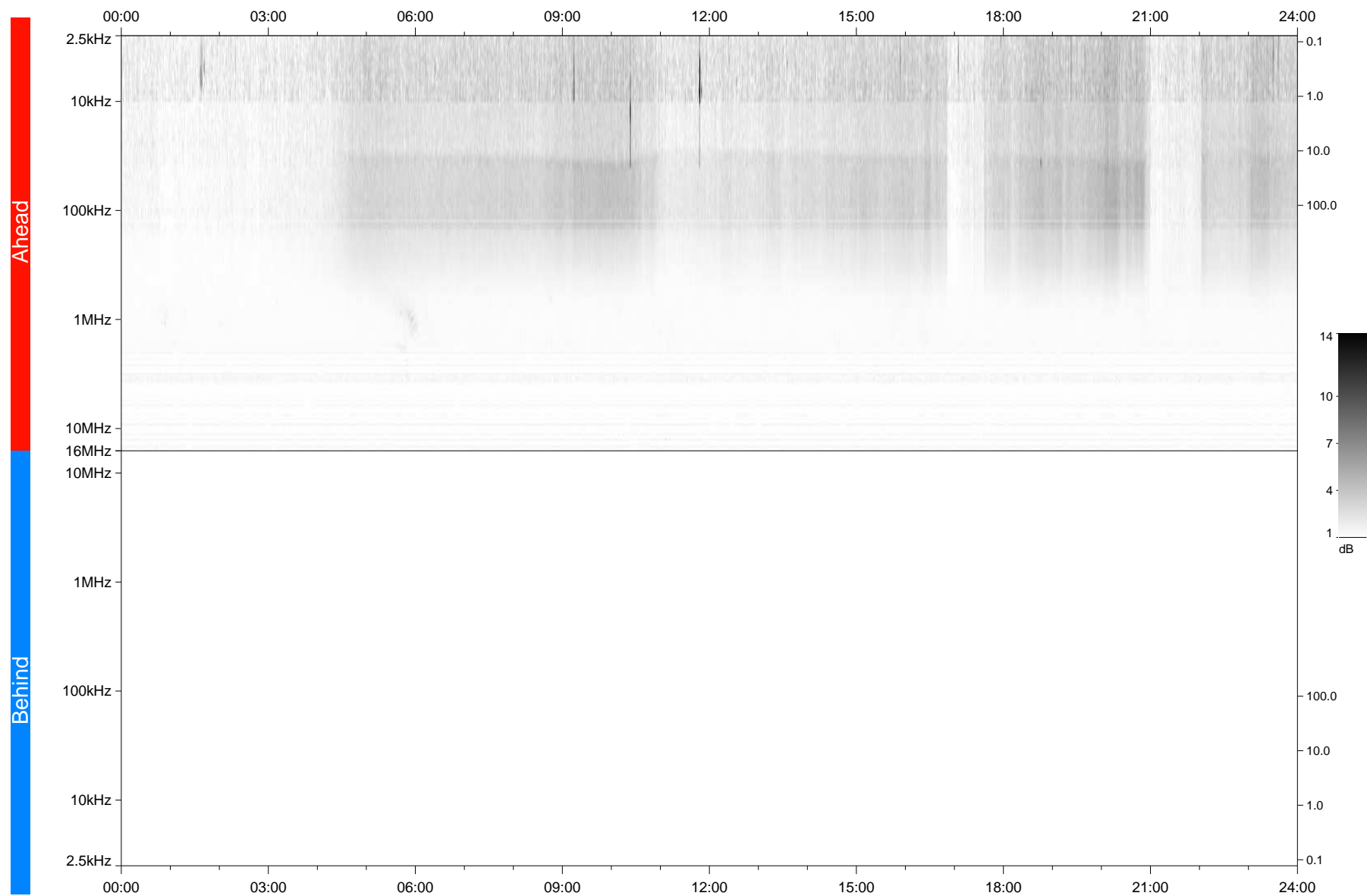


STEREO/WAVES Daily Summary - 02-Feb-2021 (DOY 033)

Ahead source file: swaves_ahead_2021_033_1_05.fin
Ahead PSE Angle: -56.3°



Behind PSE Angle: 55.8°
Behind source file: No STEREO-B data

Time (UTC)

file: stereo_swaves_daily-summary_gray_20210202_v03
made by: space.umn.edu on macOS with IDL 8.8.2 on 2022-08-24 14:09:48, with TLib V945 / dynspec V311