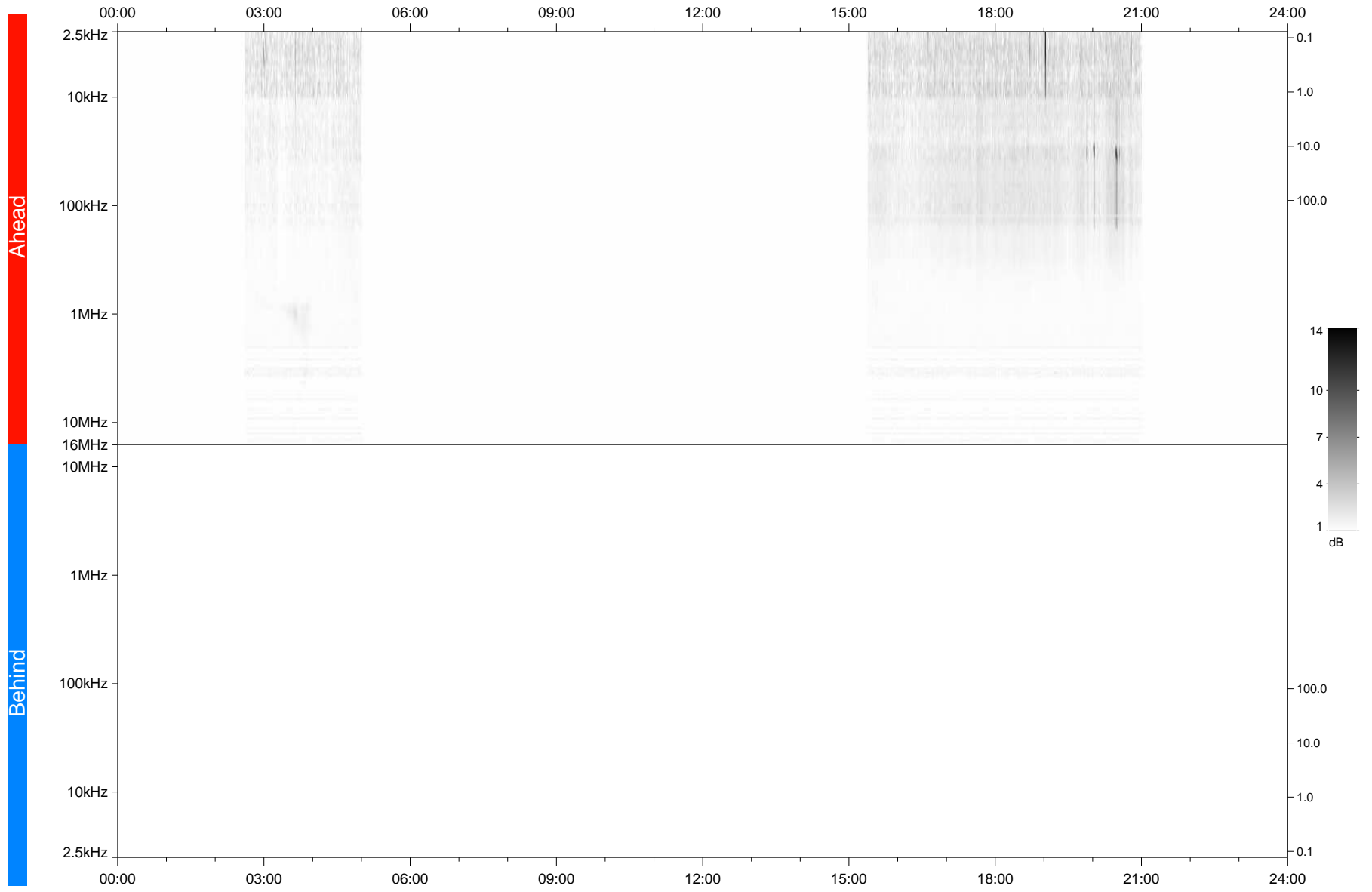


STEREO/WAVES Daily Summary - 09-Jan-2021 (DOY 009)

Ahead source file: swaves_ahead_2021_009_1_05.fin
Ahead PSE Angle: -56.7°



Behind PSE Angle: 56.9°
Behind source file: No STEREO-B data

Time (UTC)

file: stereo_swaves_daily-summary_gray_20210109_v04
made by: space.umn.edu on macOS with TDL 8.8.2 on 2022-10-02 12:14:52, with TLib V945 / dynspec V311