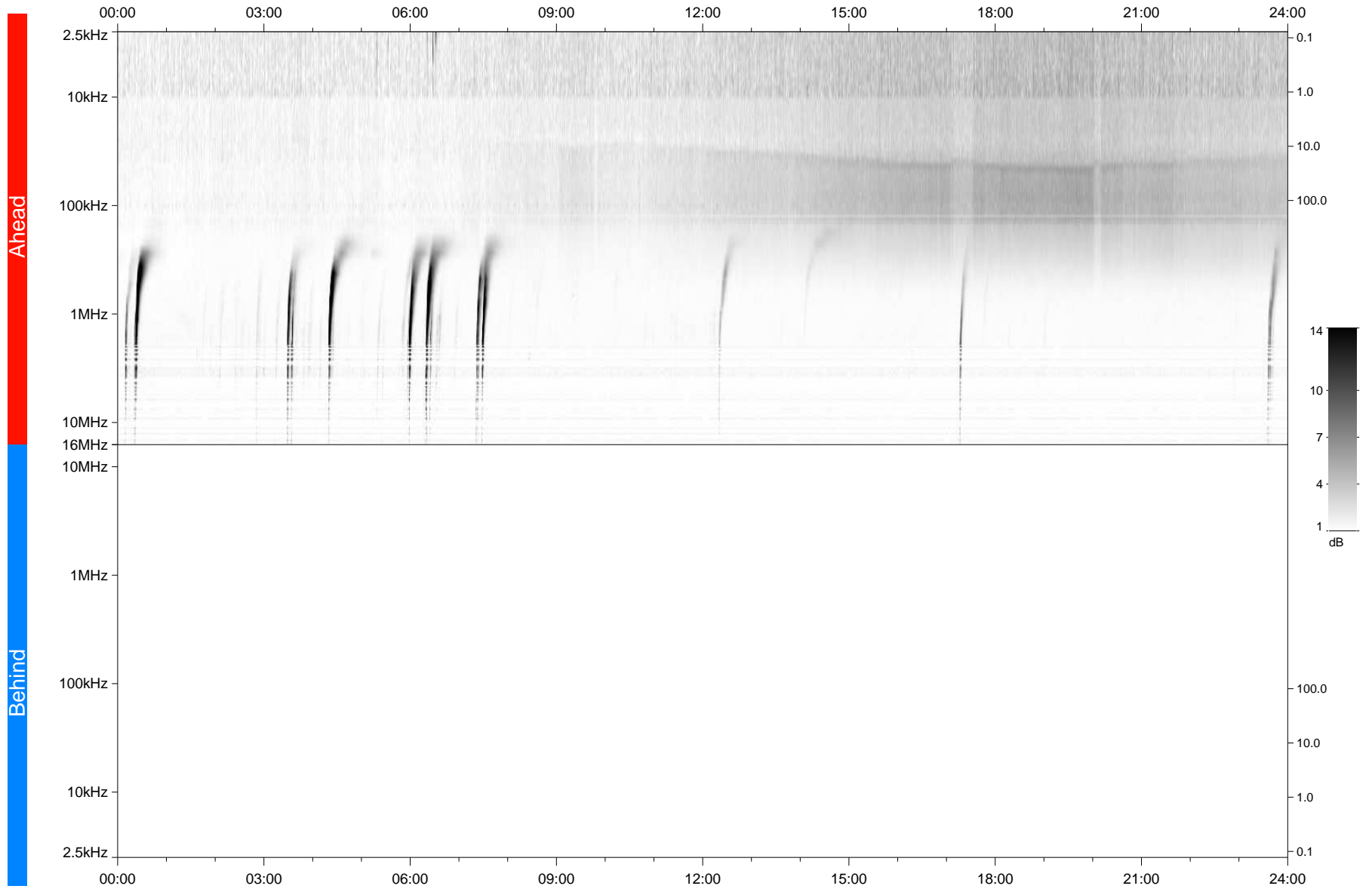


STEREO/WAVES Daily Summary - 28-Dec-2020 (DOY 363)

Ahead source file: swaves_ahead_2020_363_1_05.fin
Ahead PSE Angle: -57.1°



Behind PSE Angle: 57.2°
Behind source file: No STEREO-B data

Time (UTC)

file: stereo_swaves_daily-summary_gray_20201228_v04
made by: space.umn.edu on macOS with TDL 8.8.2 on 2022-10-03 20:21:16, with TMLib V945 / dynspec V311