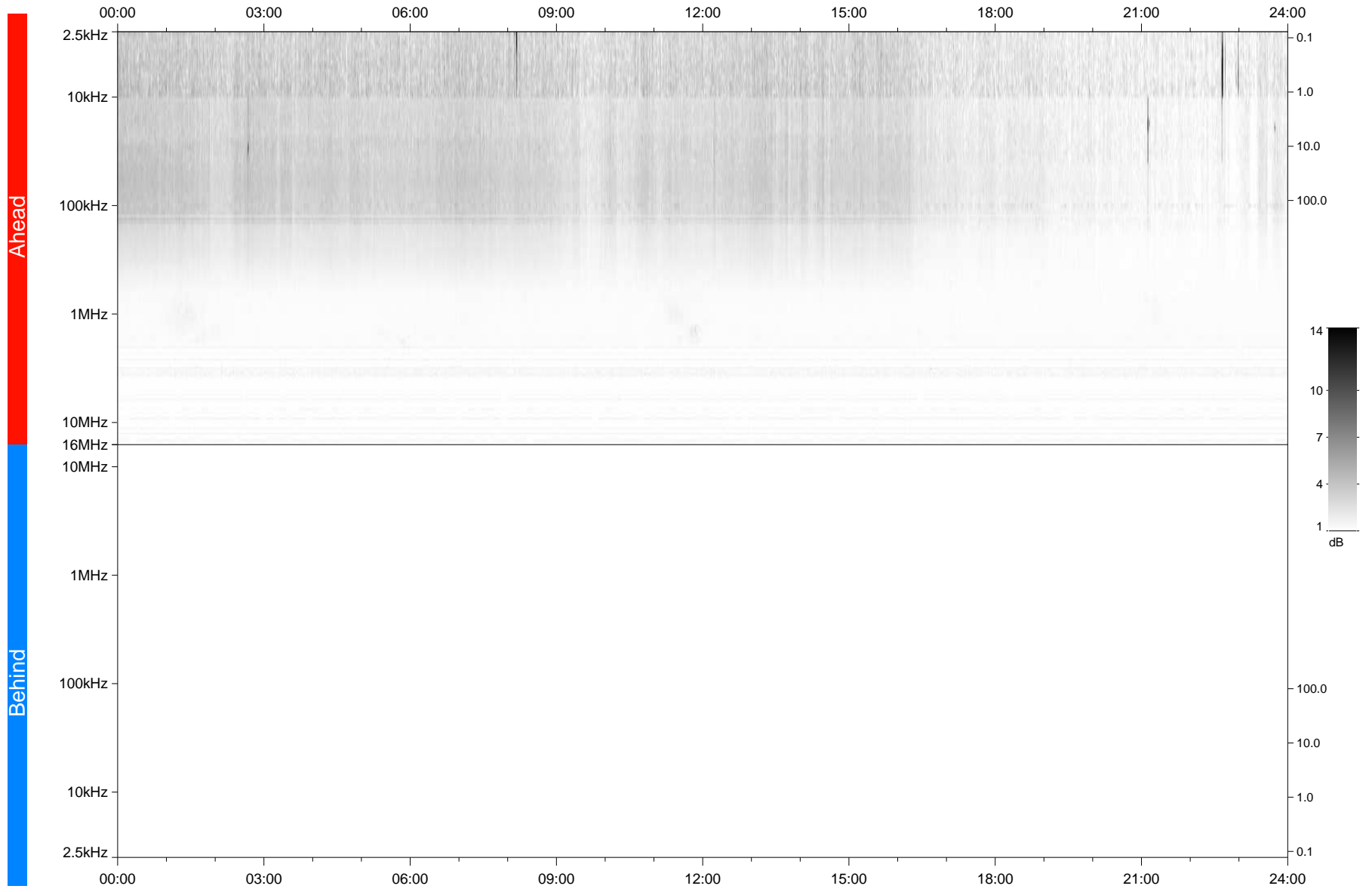


STEREO/WAVES Daily Summary - 16-Dec-2020 (DOY 351)

Ahead source file: swaves_ahead_2020_351_1_05.fin
Ahead PSE Angle: -57.4°



Behind PSE Angle: 57.5°
Behind source file: No STEREO-B data

Time (UTC)

file: stereo_swaves_daily-summary_gray_20201216_v04
made by: space.umn.edu on macOS with TDL 8.8.2 on 2022-10-03 20:03:15, with TMLib V945 / dynspec V311