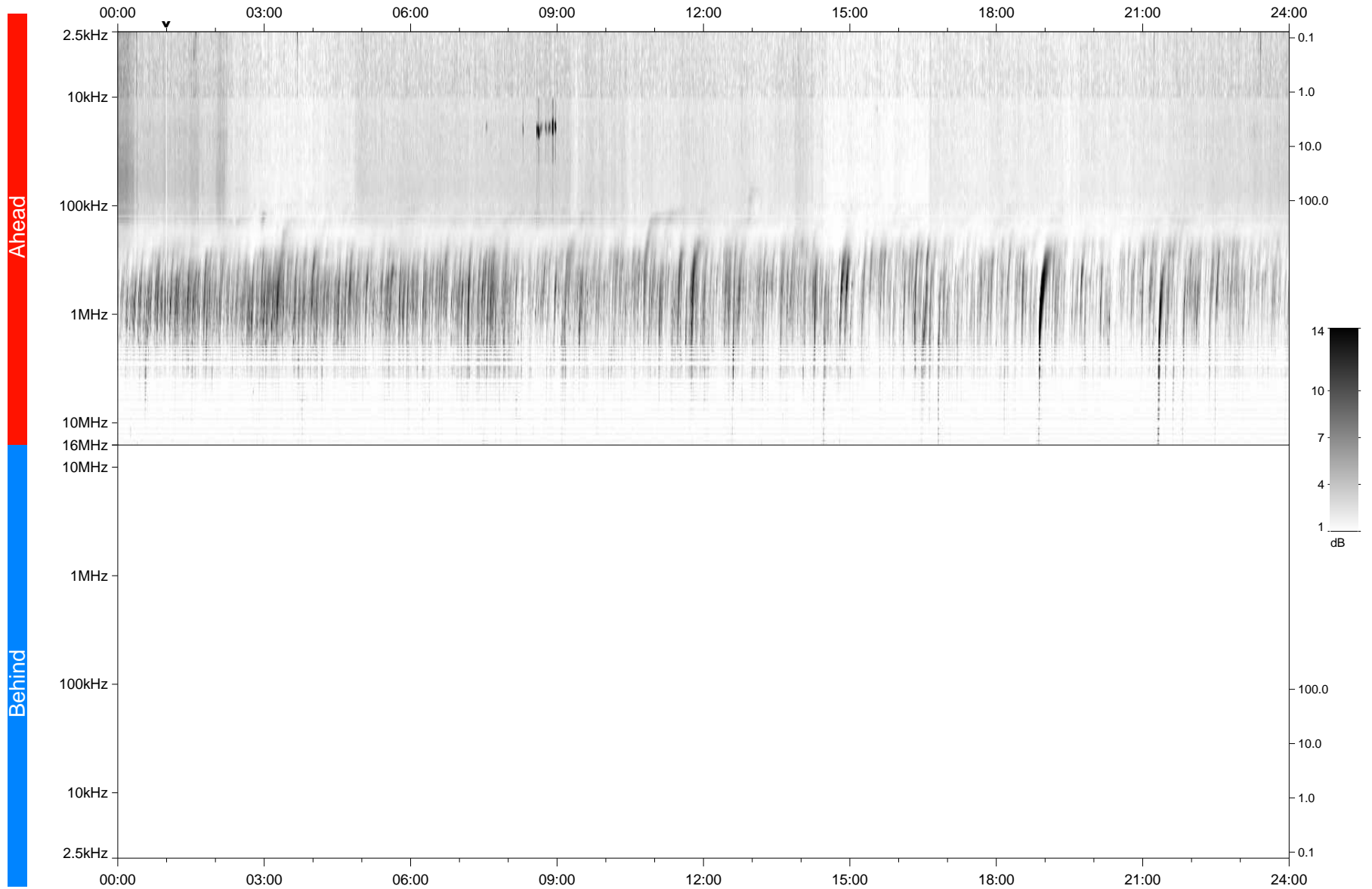


STEREO/WAVES Daily Summary - 27-Nov-2020 (DOY 332)

Ahead source file: swaves_ahead_2020_332_1_05.fin
Ahead PSE Angle: -58.1°



Behind PSE Angle: 57.7°
Behind source file: No STEREO-B data

Time (UTC)

file: stereo_swaves_daily-summary_gray_20201127_v04
made by: space.umn.edu on macOS with IDL 8.8.2 on 2022-10-03 19:34:48, with TLib V945 / dynspec V311