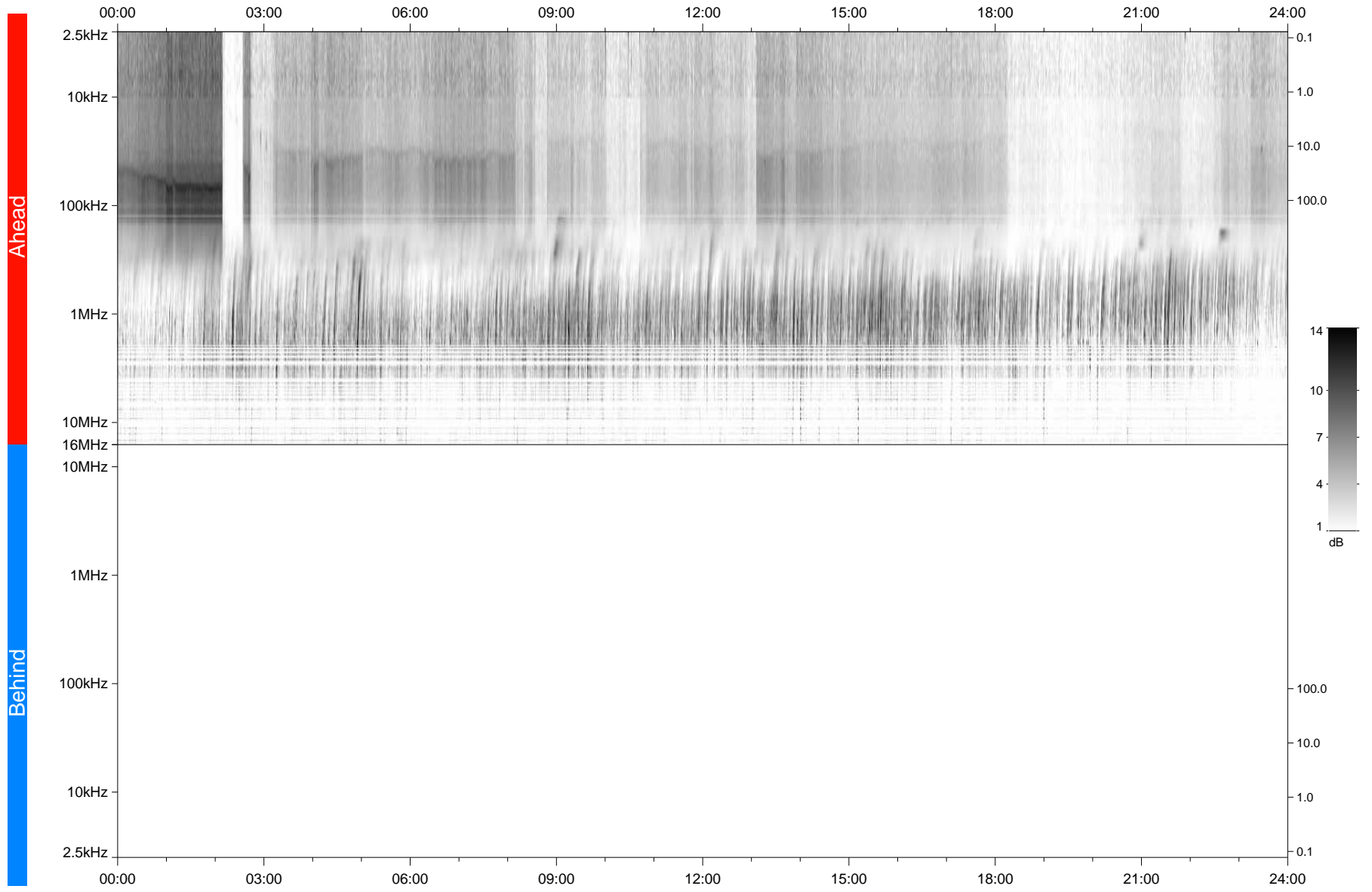


# STEREO/WAVES Daily Summary - 26-Nov-2020 (DOY 331)

Ahead source file: swaves\_ahead\_2020\_331\_1\_05.fin  
Ahead PSE Angle: -58.1°



Behind PSE Angle: 57.7°  
Behind source file: No STEREO-B data

Time (UTC)

file: stereo\_swaves\_daily-summary\_gray\_20201126\_v04  
made by: space.umn.edu on macOS with IDL 8.8.2 on 2022-10-03 19:33:18, with TLib V945 / dynspec V311