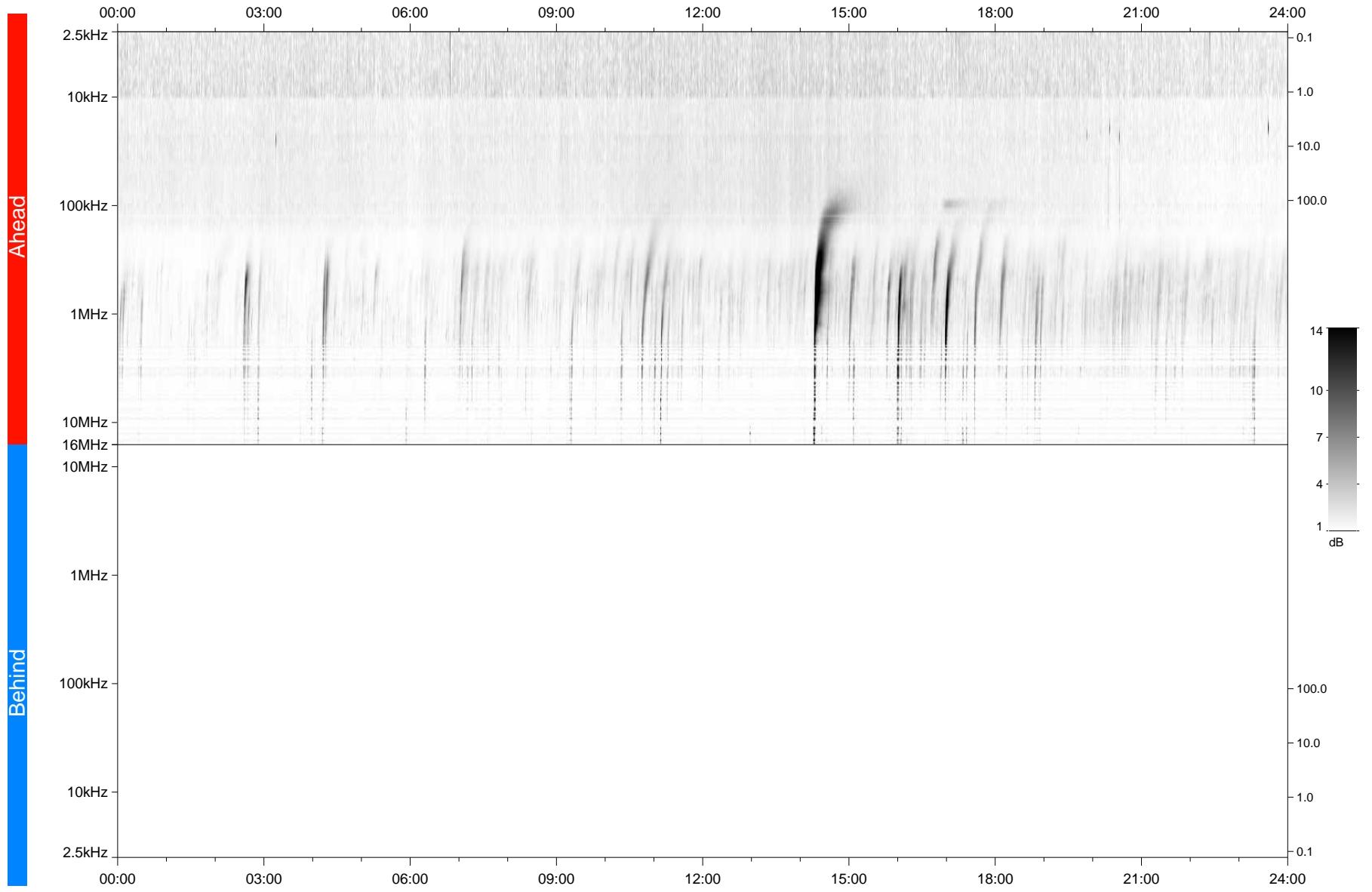


STEREO/WAVES Daily Summary - 22-Nov-2020 (DOY 327)

Ahead source file: swaves_ahead_2020_327_1_05.fin
Ahead PSE Angle: -58.2°



Behind PSE Angle: 57.7°
Behind source file: No STEREO-B data

Time (UTC)

file: stereo_swaves_daily-summary_gray_20201122_v04
made by: space.umn.edu on macOS with TDL 8.8.2 on 2022-10-03 19:27:19, with TMLib V945 / dynspec V311