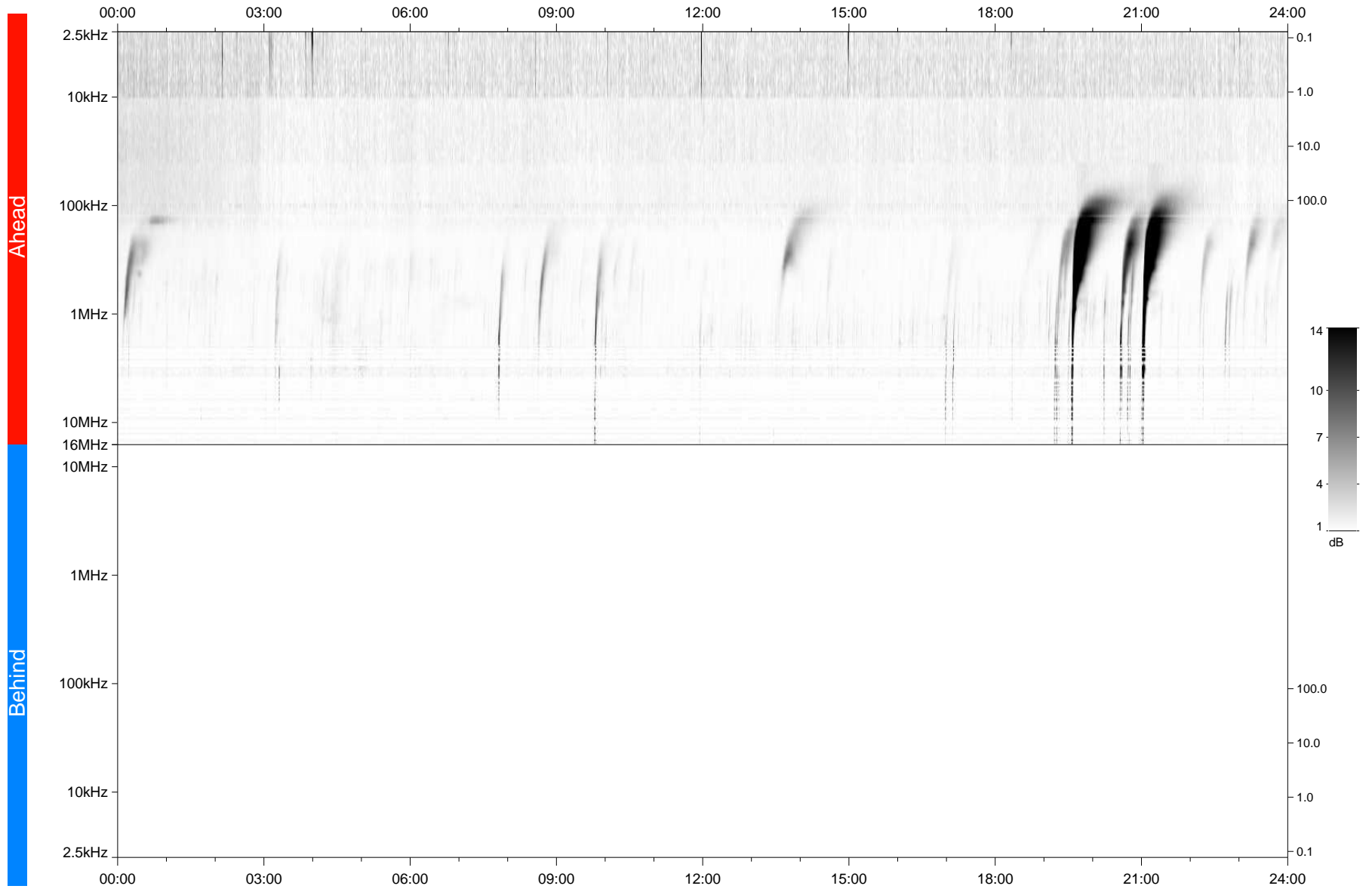


STEREO/WAVES Daily Summary - 20-Nov-2020 (DOY 325)

Ahead source file: swaves_ahead_2020_325_1_05.fin
Ahead PSE Angle: -58.3°



Behind PSE Angle: 57.7°
Behind source file: No STEREO-B data

Time (UTC)

file: stereo_swaves_daily-summary_gray_20201120_v03
made by: space.umn.edu on macOS with TDL 8.8.2 on 2022-09-15 18:18:06, with Tlib V945 / dynspec V311