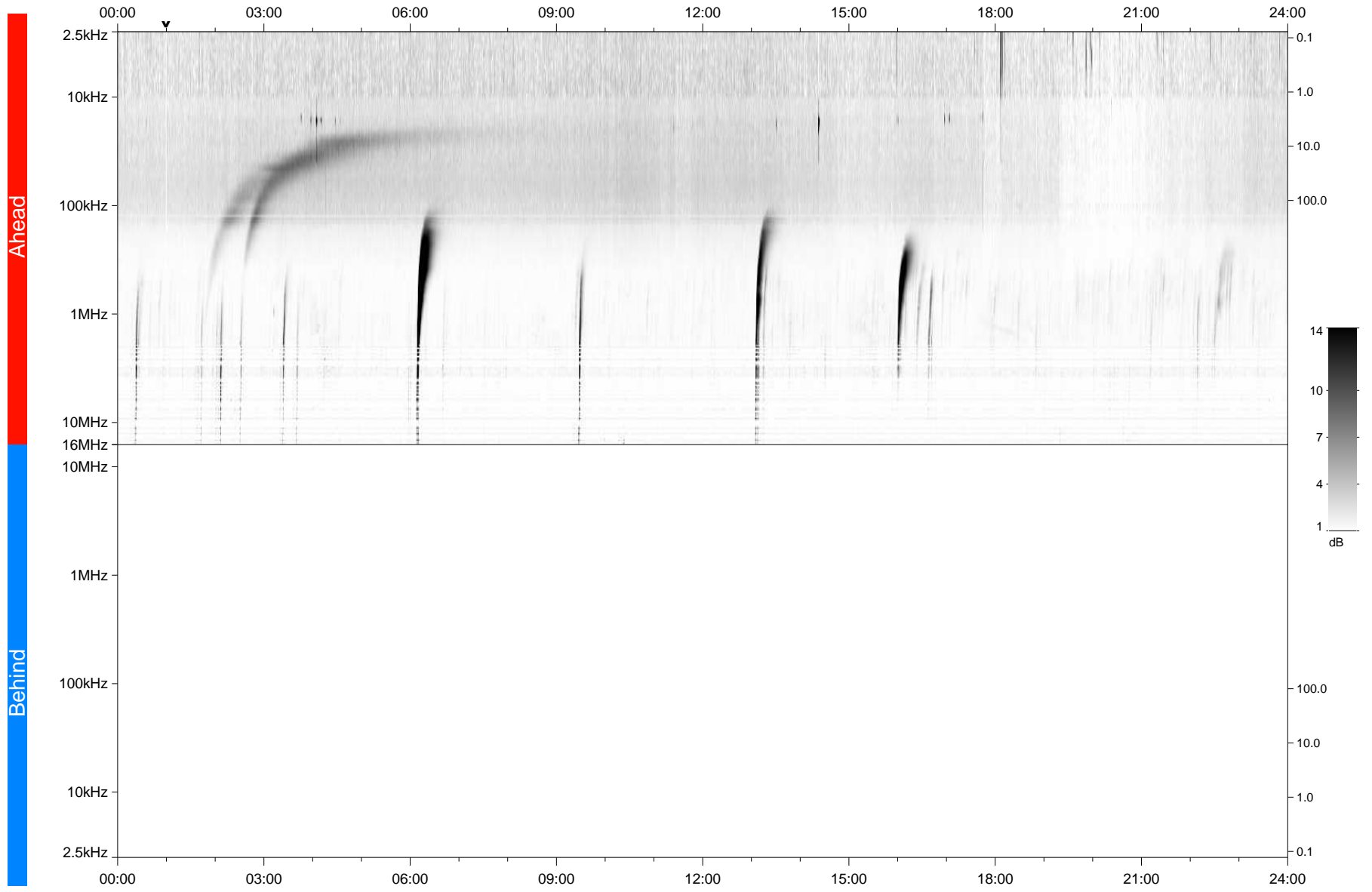


STEREO/WAVES Daily Summary - 19-Nov-2020 (DOY 324)

Ahead source file: swaves_ahead_2020_324_1_05.fin
Ahead PSE Angle: -58.4°



Behind PSE Angle: 57.7°
Behind source file: No STEREO-B data

Time (UTC)

file: stereo_swaves_daily-summary_gray_20201119_v04
made by: space.umn.edu on macOS with TDL 8.8.2 on 2022-10-03 19:22:51, with TLib V945 / dynspec V311