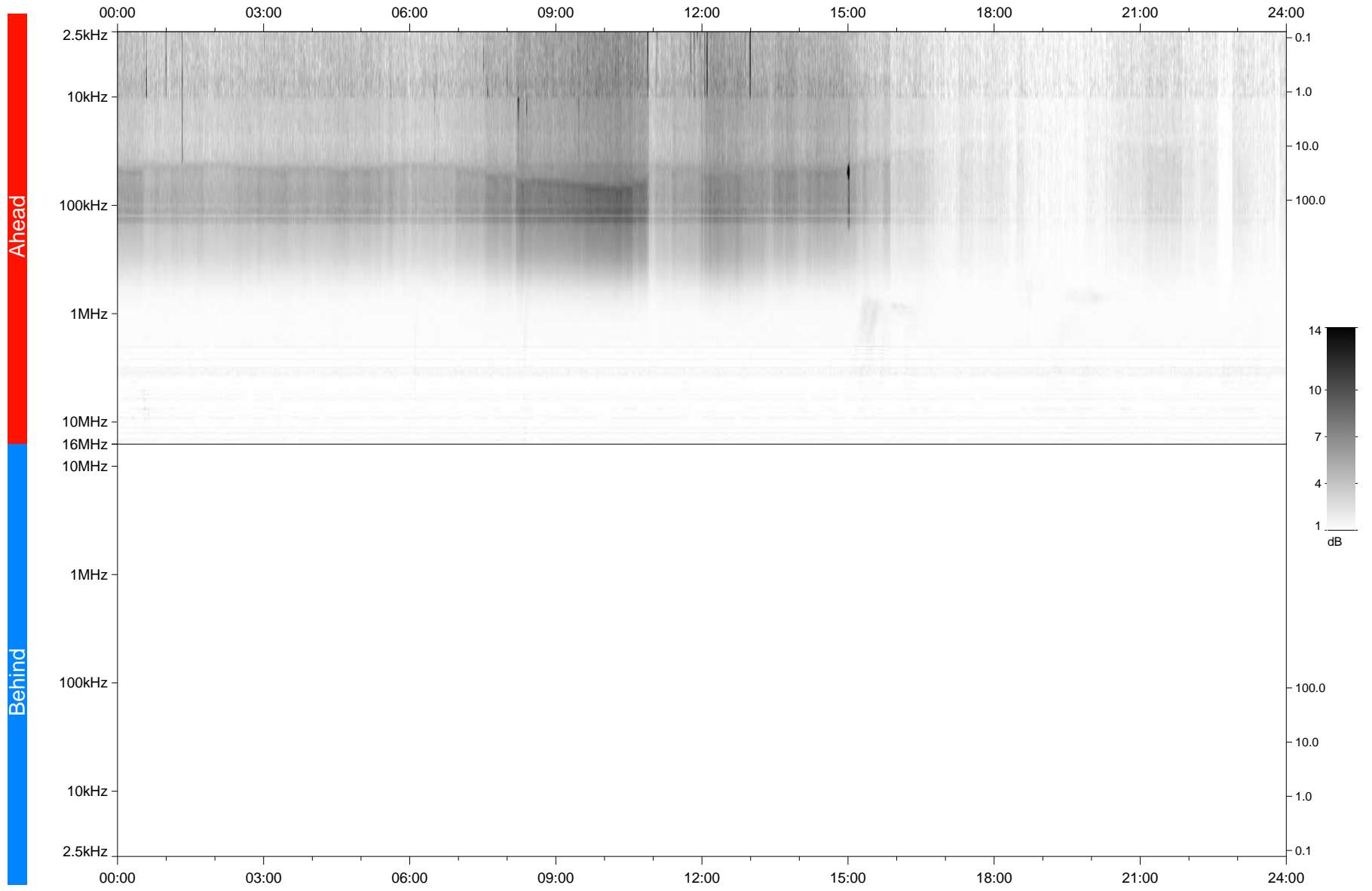


STEREO/WAVES Daily Summary - 12-Nov-2020 (DOY 317)

Ahead source file: swaves_ahead_2020_317_1_05.fin
Ahead PSE Angle: -58.6°



Behind PSE Angle: 57.8°
Behind source file: No STEREO-B data

Time (UTC)

file: stereo_swaves_daily-summary_gray_2020112_v03
made by: space.umn.edu on macOS with IDL 8.8.2 on 2022-09-15 18:07:12, with TMLib V945 / dynspec V311