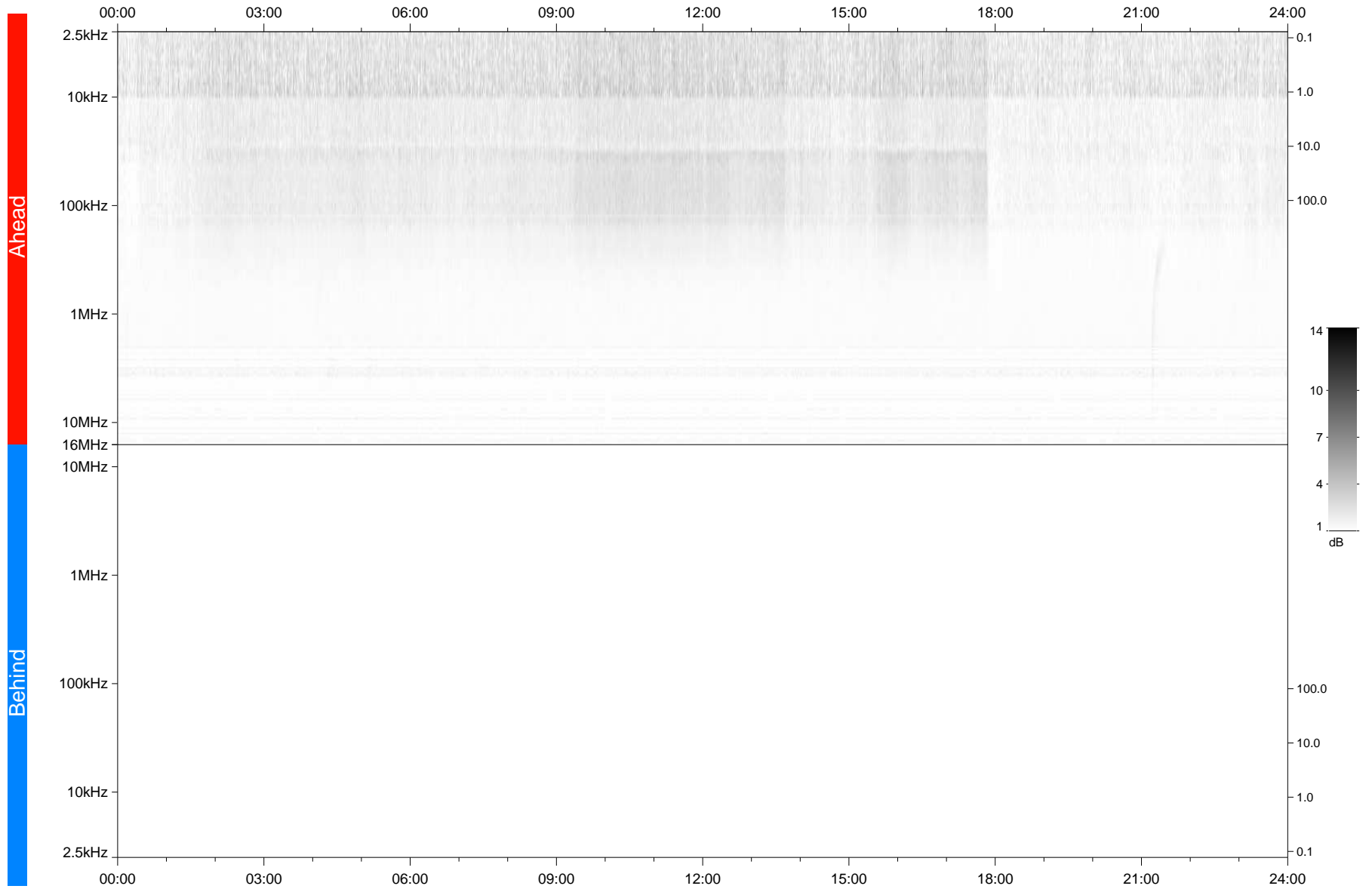


STEREO/WAVES Daily Summary - 10-Nov-2020 (DOY 315)

Ahead source file: swaves_ahead_2020_315_1_05.fin
Ahead PSE Angle: -58.7°



Behind PSE Angle: 57.8°
Behind source file: No STEREO-B data

Time (UTC)

file: stereo_swaves_daily-summary_gray_20201110_v03
made by: space.umn.edu on macOS with IDL 8.8.2 on 2022-09-15 18:04:27, with TMLib V945 / dynspec V311