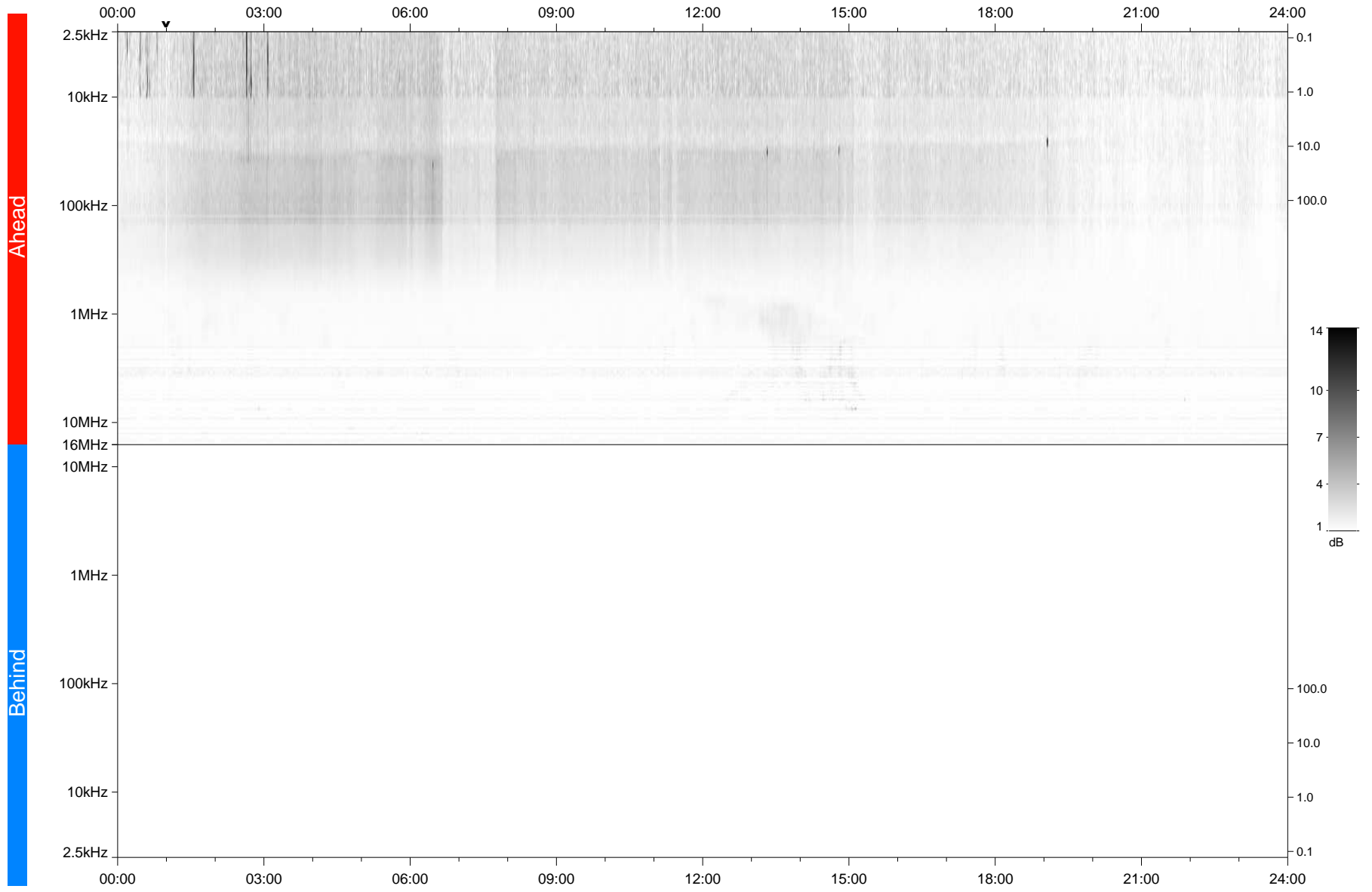


STEREO/WAVES Daily Summary - 03-Nov-2020 (DOY 308)

Ahead source file: swaves_ahead_2020_308_1_06.fin
Ahead PSE Angle: -59.1°



Behind PSE Angle: 57.8°
Behind source file: No STEREO-B data

Time (UTC)

file: stereo_swaves_daily-summary_gray_20201103_v04
made by: space.umn.edu on macOS with IDL 8.8.2 on 2022-10-03 18:58:50, with TMLib V945 / dynspec V311