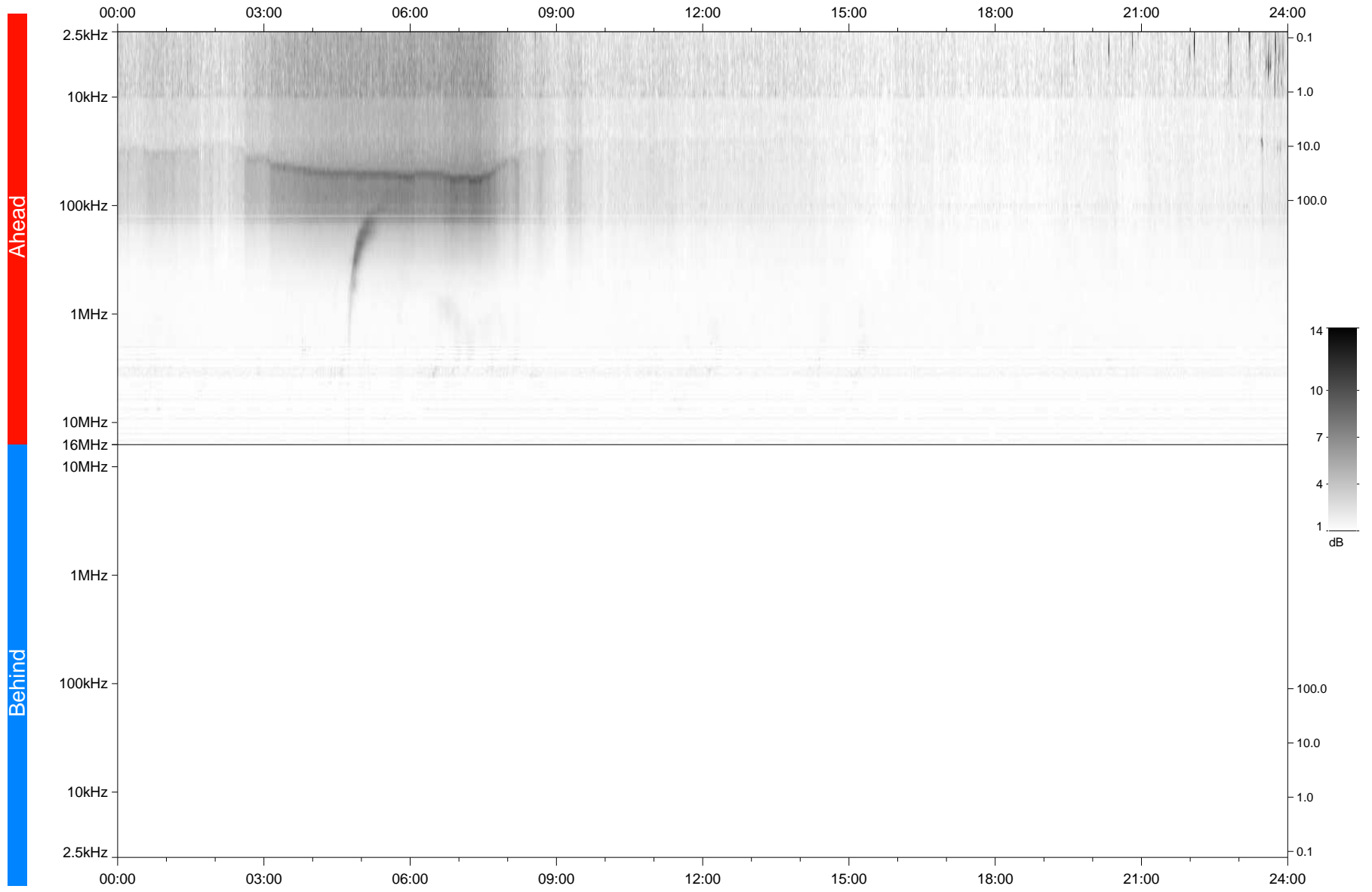


STEREO/WAVES Daily Summary - 02-Nov-2020 (DOY 307)

Ahead source file: swaves_ahead_2020_307_1_06.fin
Ahead PSE Angle: -59.2°



Behind PSE Angle: 57.8°
Behind source file: No STEREO-B data

Time (UTC)

file: stereo_swaves_daily-summary_gray_20201102_v03
made by: space.umn.edu on macOS with IDL 8.8.2 on 2022-09-15 17:53:30, with TMLib V945 / dynspec V311