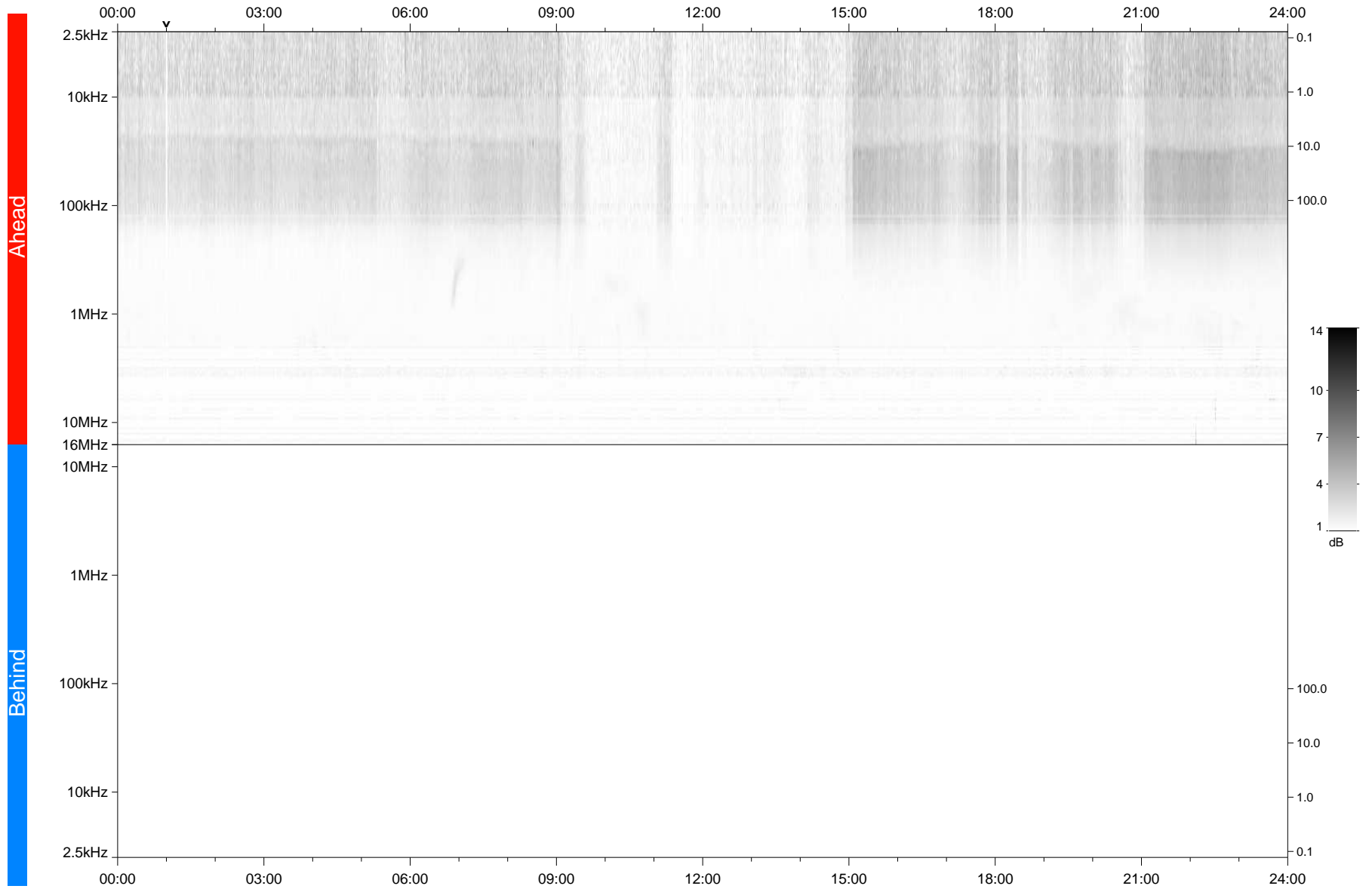


STEREO/WAVES Daily Summary - 01-Nov-2020 (DOY 306)

Ahead source file: swaves_ahead_2020_306_1_05.fin
Ahead PSE Angle: -59.2°



Behind PSE Angle: 57.8°
Behind source file: No STEREO-B data

Time (UTC)

file: stereo_swaves_daily-summary_gray_20201101_v04
made by: space.umn.edu on macOS with TDL 8.8.2 on 2022-10-03 18:55:49, with TMatlab V945 / dynspec V311