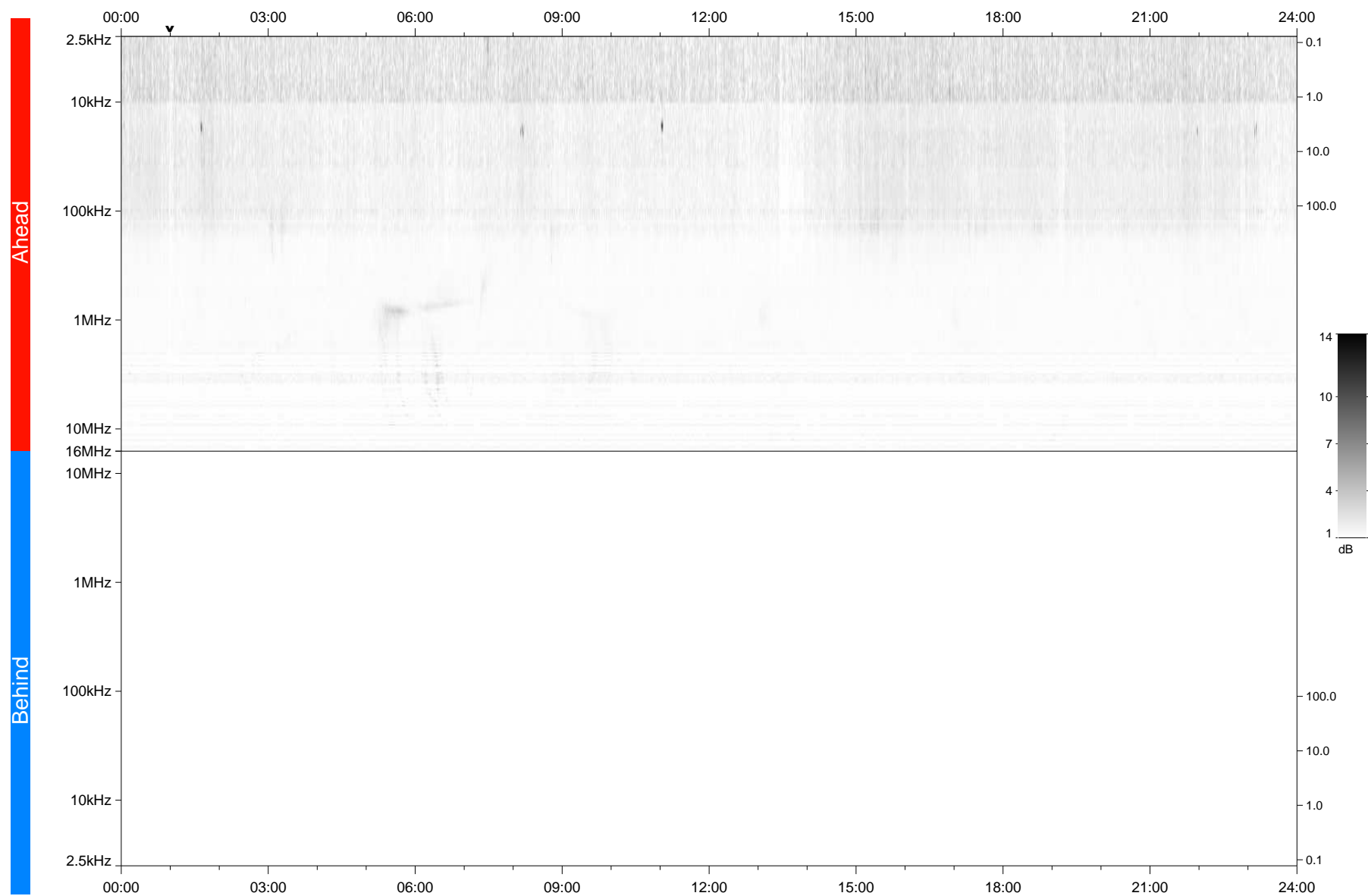


STEREO/WAVES Daily Summary - 24-Oct-2020 (DOY 298)

Ahead source file: swaves_ahead_2020_298_1_05.fin
Ahead PSE Angle: -59.7°



Behind PSE Angle: 57.8°
Behind source file: No STEREO-B data

Time (UTC)

file: stereo_swaves_daily-summary_gray_20201024_v03
made by: space.umn.edu on macOS with TDL 8.8.2 on 2022-09-15 17:41:14, with Tlib V945 / dynspec V311