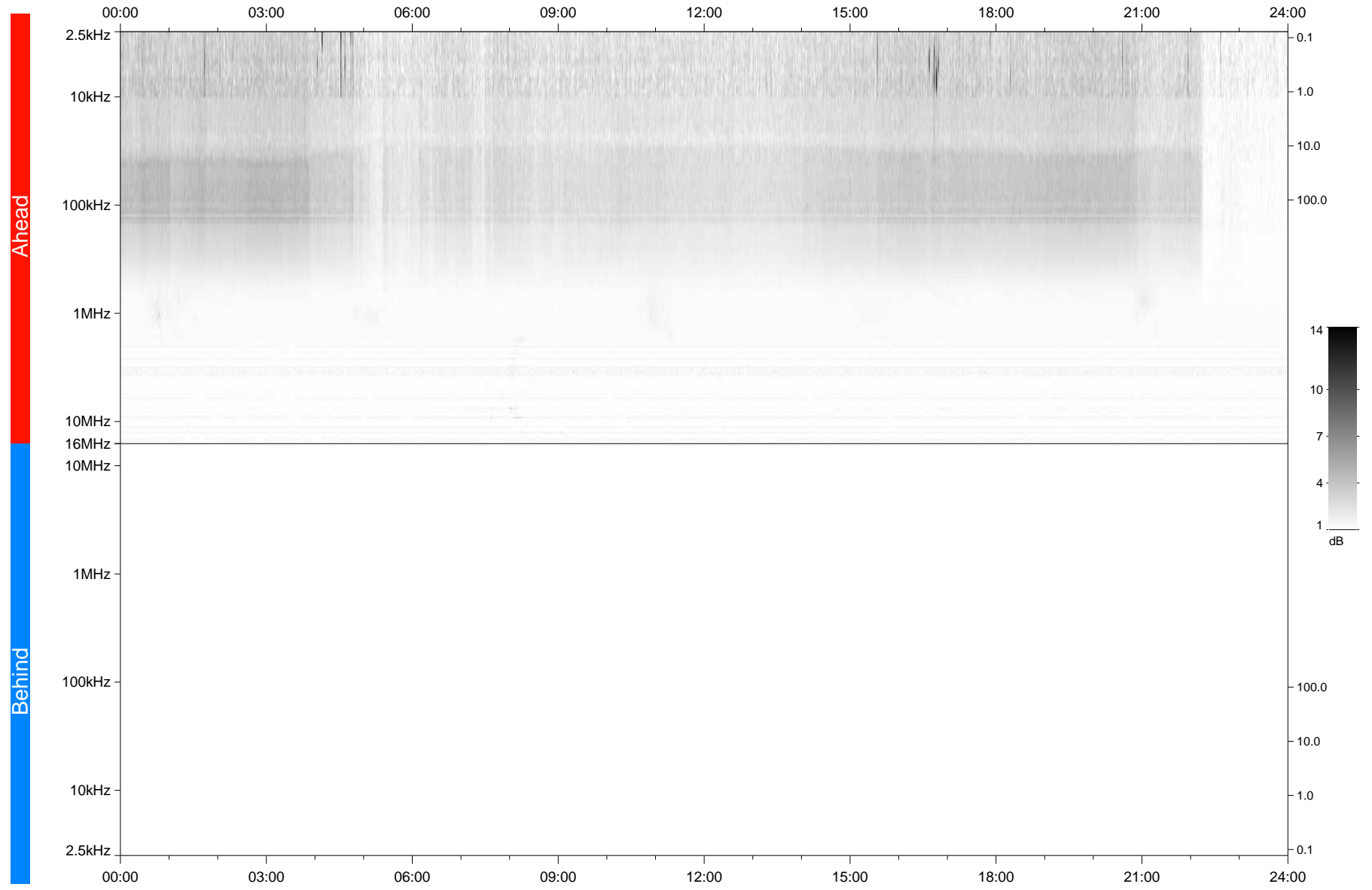


STEREO/WAVES Daily Summary - 03-Oct-2020 (DOY 277)

Ahead source file: swaves_ahead_2020_277_1_05.fin
Ahead PSE Angle: -61.1°



Behind PSE Angle: 58.0°
Behind source file: No STEREO-B data

Time (UTC)

file: stereo_swaves_daily-summary_gray_20201003_v03
made by: space.umn.edu on macOS with TDL 8.8.2 on 2022-09-15 17:12:32, with TLib V945 / dynspec V311